

Sing-kik
ACU student

We're
here.

To get
you there.



CELEBRATING
30 years
1990 - 2020





Contents

- 02** Think you know ACU?
You're just getting started

- 04** Our campuses

- 06** Numbers that count

- 08** Life at ACU

- 12** Our institutes

- 13** Postgraduate study pathways

- 14** Fees and scholarships

- 15** Applying to ACU

- 16** Course information

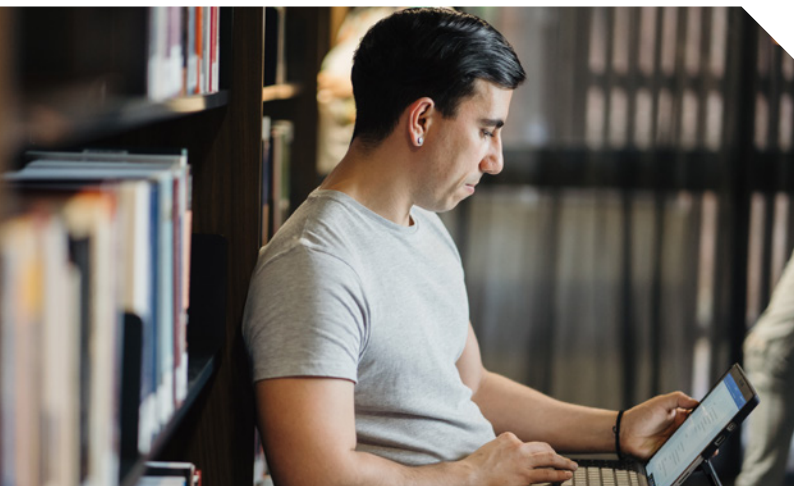
- 72** Executive Education

- 73** Course directory



Think you know ACU?

You're just getting started.
It's education, but not as
you know it.





Meaningful education, not mass production

We're a university committed to standing up for people in need and causes that matter. If you've got the desire to make an impact, we'll give you the skills to change the world. And if you want to start making an impact now – you can. Research within our faculties and institutes tackles enduring and pressing issues in society, in Australia, and around the world.



The world is your campus

We're young, but we are making our mark. We're ranked in the top 40 of Generation Y universities worldwide* and in the top 10 Catholic universities** – alongside Georgetown University and Boston College in the US. We've got more than 200 partners on six continents, community engagement opportunities around the globe, and a campus in Rome, Italy.

*Times Higher Education Young University Rankings 2019

**Times Higher Education World University Rankings 2020, IFCU members



Flexible study

Study needs to be flexible. We get that life changes fast, and you need to find the right balance of family, work and study. Many of our courses offer part-time options, as well as online learning, travel opportunities, intensive units, and flexible start dates.



We've got your back

Whether it's figuring out how to enrol or finding the best coffee on campus, we'll help you out in person, online, by phone, or even SMS. And if you need support with your studies, or counselling services, we've got that covered too.

acu.edu.au/askacu



We care about you

Everyone is welcome at ACU. We're inclusive and supportive of everyone, every day, and our students feel it – giving us five stars for learner engagement and skills development*.

Your wellbeing is our focus. So we have a huge range of support services to help you thrive while on campus. See page 8.

*Good Universities Guide 2020



Connections that count

Our partnerships around Australia and overseas provide rich learning experiences for our students. These relationships enhance student learning and provide opportunities for practical work experience and collaborative research.



Scholarships

We know that balancing the cost of living and study can be tricky. So we offer nearly 400 scholarship opportunities which recognise academic achievement, community participation, and help out students from a range of backgrounds.

acu.edu.au/scholarships

Our campuses

We've got eight campuses around Australia, and a campus in Rome, Italy. Each one is unique, but they're all dynamic, inviting and great places to learn.

Head to acu.edu.au/tour to take a virtual tour of your campus.



BALLARAT

Our Ballarat Campus is located in the centre of the city. Situated amid historical gardens, beautiful old buildings, and a block from Lake Wendouree, it has a lot to offer. Explore the grounds, enjoy a home-cooked meal at the canteen, and soak up the community vibe.

- Central location
- Free parking
- State-of-the-art physiotherapy building with labs and simulation rooms

BLACKTOWN

We've partnered with Blacktown City Council to open a new ACU campus in Blacktown, Western Sydney.

- Student information centre opening 2020
- Range of courses on offer from 2021
- Excellent transport links close by

BRISBANE

Whether you want to get involved in campus life, create a professional network or just find a quiet place to study — our Brisbane Campus has you covered. Set on 40 hectares of parklands, the campus has ample parking, state-of-the-art learning facilities, and places to hang out like cafes and a swimming pool.

- Free parking and shuttle bus
- Excellent health labs and health clinic
- Newly renovated library



CANBERRA

Just five kilometres from the city centre, our Canberra Campus has plenty to offer. With a campus lounge, swimming pool and beautiful landscaped gardens, you'll have a lot to keep you busy between classes.

- Modern nursing, paramedicine, social work and health sciences labs
- Free parking and accessible by light rail and bus
- Library and 300-seat lecture theatre



MELBOURNE

Our Melbourne Campus is right next to the cafes, art galleries and live music venues of Brunswick Street. Kick back with a coffee on our rooftop garden or hang out with friends in one of our cafes.

- Close to six tram routes, bus routes and Parliament Railway Station
- Award-winning library
- Art gallery and media production studios



NORTH SYDNEY

Just across the Harbour Bridge from the city centre, our North Sydney Campus is a great place to study and relax.

- High-tech nursing simulation, speech pathology and occupational therapy labs
- Moot court, for simulating real-life law court proceedings
- Short walk from the train station



STRATHFIELD

Our Strathfield Campus is set amid beautiful landscaped grounds and historical buildings, with excellent transport links. Whether you want to have a friendly match on our rugby and soccer ovals or take in a show at our art gallery, there's always something going on.

- Onsite, undercover parking and shuttle bus
- Art gallery
- High-tech biomechanics lab



ROME, ITALY

Our Rome Campus is located on Janiculum Hill, a site that has a rich history dating back to the 3rd century. It sits on a sprawling property that boasts extensive gardens and terraces to enjoy beautiful views of the city.

- Close to the Vatican and popular tourist sites
- Contemporary, onsite residential accommodation
- Community engagement opportunities



ADELAIDE

Our Adelaide Campus is one of our newest additions, and primarily offers postgraduate courses in theology.



IN AUSTRALIA

5 stars

FOR EMPLOYABILITY,
INTERNATIONALISATION AND
FACILITIES

QS Stars 2019



5 stars

FOR FULL-TIME EMPLOYMENT,
LEARNER ENGAGEMENT AND
SKILLS DEVELOPMENT

Good Universities Guide 2020



**Numbers
that count**



IN THE WORLD

Top 2%

UNIVERSITIES

*Times Higher Education World University Rankings 2020**



Top 40

GENERATION Y UNIVERSITIES

Times Higher Education Young University Rankings 2019



Top 80

UNIVERSITIES IN ASIA-PACIFIC

Times Higher Education Asia-Pacific University Rankings 2019



Top 10

CATHOLIC UNIVERSITIES

Times Higher Education World University Rankings 2020, ranked IFCU members



Top 50

SPORTS SCIENCE

(#26 ARWU 2018)

NURSING

(#32 ARWU 2019)



Top 100

EDUCATION

(Top 75 ARWU 2019)



RESEARCH

First or equal first in Australia

CARDIORESPIRATORY MEDICINE AND HAEMATOLOGY

CLINICAL SCIENCES

COGNITIVE SCIENCES

HUMAN MOVEMENT AND SPORTS SCIENCE

NURSING

NUTRITION AND DIETETICS

PSYCHOLOGY

PUBLIC HEALTH AND HEALTH SERVICES

RELIGION AND RELIGIOUS STUDIES

SPECIALIST STUDIES IN EDUCATION

Four-digit FoRs, Excellence in Research for Australia (ERA) 2018

*Percentage calculated as ACU's world rank as a proportion of the total number of universities in the world: *International Handbook of Universities 2019*, Palgrave MacMillan.



Life at ACU

Your wellbeing is our biggest priority. And we know the support of a caring community will help you achieve your best. At ACU, you'll join a vibrant community and have the support you need to thrive during, and after, your studies.

Be supported

ABORIGINAL AND TORRES STRAIT ISLANDER STUDENT HUBS

Our Indigenous Higher Education Units on each campus offer academic, personal and cultural support in a welcoming and culturally safe space.

acu.edu.au/indigenoussupport

ACADEMIC SKILLS SUPPORT

Set yourself up for academic success with help from our academic skills development team. Take part in workshops, explore online resources or have an in-person consultation.

acu.edu.au/academic-skills-development

CAREER ADVICE

Enhancing your employability is our job. Access career advice, application and interview assistance, workshops and professional development. We'll also help you engage with employers, seek a student job on campus or develop your entrepreneurial skills.

acu.edu.au/careersupport

COUNSELLING

Our counselling services are committed to supporting you in your postgraduate studies and personal life. Book a session with a counsellor in person, online or over the phone. Or sign up to our free online modules dedicated to postgraduate students. These are designed to guide you to successful thesis completion, or assist you with building your own academic and personal plan to help you identify areas where you may benefit from further support.

acu.edu.au/counselling-services

Find your place in a place that cares.



DISABILITY SUPPORT

If you are a student with a temporary or ongoing diagnosed health condition, disability, mental health issue or learning disability, or if you have significant carer responsibilities, our disability advisors can help you put together a plan to manage your study. We provide information and advice on reasonable adjustments, such as the types of accessibility software and hardware that can assist you in your postgraduate studies.

acu.edu.au/disability-support

STUDENT ADVOCACY

We offer information, advice and a referral service to help you navigate university policies and procedures. The service is confidential, free and available to all current ACU students.

acu.edu.au/student-advocacy

SAFETY

We want you to flourish on campus. That's why we're committed to making our university a place of safety and respect for all students and staff.

acu.edu.au/student-safety

MEDICAL SERVICES

ACU has medical centres on our Brisbane and Melbourne campuses. They offer comprehensive, high-quality health care services to students, staff and the local community. Bulk billing is available.

acu.edu.au/medical-centres

Get involved

GET AHEAD BY GIVING BACK

At ACU we're all about making an impact. And you don't need to wait until you've finished your degree. We offer a huge range of community engagement and volunteering opportunities, both in Australia and overseas.

acu.edu.au/acuengagement

STUDENT ENRICHMENT

We're dedicated to fostering an enjoyable and diverse culture that engages students, staff and the wider community in a vibrant and dynamic campus life. We run a range of activities throughout the year, and you'll gain the opportunity to develop new skills through programs such as Auslan lessons, guitar lessons, foreign language classes, cultural celebrations, creative and performing arts programs and more.

acu.edu.au/studentlife

SPORT AND FITNESS

Enjoy the many opportunities available on your campus. Play sport competitively or just for fun, join a campus gym or take part in regular fitness classes.

acu.edu.au/sports-and-fitness

CAMPUS MINISTRY

Our Campus Ministry teams work to bring the distinctive Catholic identity and mission of ACU to life. Offering a range of activities and services, our teams work to build an inclusive student community, care for your pastoral needs and spiritual wellbeing, and encourage you to see the world in new and different ways.

acu.edu.au/campusministry

SPACE FOR ALL FAITHS

You don't need to be Catholic to study with us. Across our university, staff and students of all faiths – or none – find their place at ACU. Our chapels and multifaith prayer rooms are for students and staff of all faiths and offer a welcoming and quiet space to pray and reflect.

acu.edu.au/all-faiths

POSTGRADUATE STUDENTS ASSOCIATION

The ACU Postgraduate Students Association regularly runs networking events, seminars, and professional development activities to enhance the research and writing skills of postgraduate students.

Membership is free and is open to all ACU postgraduate students.

acu.edu.au/campus-life

Our people

Our academics are experts in their fields. They achieve research excellence, are engaged with industry, and are committed teachers and mentors.



PROFESSOR SUSAN DANN AM

Professor Susan Dann is the National Head of the Peter Faber Business School. Previously, Professor Dann held academic appointments at Queensland University of Technology, Griffith University and the University of Queensland.

As a former State President and National Deputy President of the Australian Marketing Institute, Professor Dann's expertise and research interest is in the strategic application of marketing to non-commercial organisations, with a specific interest in social marketing. Using this expertise, Professor Dann has spanned the boundaries of academia and industry through consultancies and external appointments. She has served as a director on a variety of governance boards, as well as being a member of two key government tribunals. Professor Dann has more than 60 academic publications, including eight books, two of which have been shortlisted for awards.

Professor Dann was awarded member of the Order of Australia in 2018 for contributions to business education.



ASSOCIATE PROFESSOR MICHAEL LONGO

Dr Michael Longo is Associate Professor of Law in the Thomas More Law School. His current research interests include comparative constitutional systems, international law, human rights law and European Union (EU) law. Dr Longo engages in conceptual research that responds to global challenges and advances knowledge of the increasing intersections between international and domestic law. His work typically employs interdisciplinary methodologies and comparative techniques to understand phenomena such as globalism and the complex challenges and dilemmas of EU law and integration.

Dr Longo has published in leading Australian and international journals such as the *Federal Law Review*, the *University of New South Wales Law Journal* and the *Journal of Common Market Studies*. His prize-winning research book, *Constitutionalising Europe: Processes and Practices* (Ashgate Publishing, 2006) examines the constitutional development of the EU and the pivotal roles of law and judicial politics in establishing the EU constitutional order. Dr Longo's recent book (with Philomena Murray), *Europe's Legitimacy Crisis: From Causes to Solutions* (Palgrave, 2015) examines the complex and interwoven issues raised by the EU's ongoing crisis of legitimacy as well as suggestions for their solution. Dr Longo has undertaken fellowships and visiting scholarships in Australian and European universities.



ASSOCIATE PROFESSOR STUART CORMACK

Associate Professor Stuart Cormack from ACU's School of Behavioural and Health Sciences has spent 15 years working in the Australian Football League, including eight years as the fitness coach at the West Coast Eagles, highlighted by two grand final appearances and winning the 2006 AFL Premiership. He also spent four years as a strength and conditioning coach at the Australian Institute of Sport, where he worked with elite athletes in a variety of team and individual sports in preparation for the Sydney 2000 Olympic Games.

Associate Professor Cormack is also a Level 3 Strength and Conditioning Coach and a Life Member of the Australian Strength and Conditioning Association. He has published numerous papers in scientific journals and co-authored several book chapters, including *Physiological tests for elite athletes (2nd edition)*, *High performance training for sports*, and *Strength and conditioning - biological principles and practical applications*. Associate Professor Cormack regularly presents at sports science and coaching conferences in addition to providing consultancy support to various organisations, including the International Cricket Council and Australian Institute of Sport Combat Centre. He has an interest in all areas of athletic preparation, with a particular focus on monitoring training load and fatigue in elite athletes, and its impact on performance.



DR IZELLE LABUSCHAGNE

Dr Izelle Labuschagne is a clinical neuroscientist and a research fellow in psychology at ACU in Melbourne. Her research strives to understand the neurobiological mechanisms that are associated with dysfunctional social cognitive processes in humans, with an aim to improve quality of life and treatment options for mental health disorders.

Dr Labuschagne's research incorporates a variety of brain technologies (such as fMRI, DTI, EEG, EMG, and tDCS), cognitive assessments, and neuropsychopharmacological manipulations. She has conducted controlled trials in humans investigating the effects of antidepressants such as SSRIs, serotonergic precursors such as tryptophan, and more recently, neuropeptides such as oxytocin. Her research uses both healthy and clinical samples, with a particular focus on aging, social anxiety disorder and body dysmorphic disorder. Dr Labuschagne collaborates with leading researchers at Cambridge University, University of Birmingham, University of Chicago, and University College London.



ASSOCIATE PROFESSOR MIRIAM TANTI

Associate Professor Miriam Tanti is Campus Dean at ACU's Strathfield Campus. Since joining ACU in 2008, Associate Professor Tanti has prepared both undergraduate and postgraduate students to teach in contemporary learning environments through the meaningful integration of digital technologies. She has also worked with schools and school leaders to develop effective science, technology, engineering and maths (STEM) problem- and project-based learning frameworks and action research.

Prior to ACU, Associate Professor Tanti taught in secondary schools, specifically in technological and applied studies. Associate Professor Tanti completed her PhD through the University of Sydney. Her PhD and subsequent research have emphasised developing a slow ontological and philosophical framework that presents a vision for sustainable learning, and she is currently writing a book on this topic.



DR MARGUERITE NOLAN

Dr Marguerite (Maggie) Nolan is a Senior Lecturer in humanities in the School of Arts. She joined ACU in 2002 after completing her PhD at the University of Stirling as a Commonwealth Scholar to the United Kingdom. She also holds a Master of Arts from the University of Queensland.

Her current research project explores the role of book clubs as civic spaces in Australian cultural and social life. In addition to her work on reading and reception, Dr Nolan's research interests include contemporary Indigenous literatures, representations of race and ethnicity in Australian cultural history, and the complex issues raised by hoaxes and imposture in Australian post-war literary history. A widely published author in Australia and internationally, Dr Nolan is also an editor of the peer-reviewed journal, *Journal of Australian Studies*.



PROFESSOR ELIZABETH MCINNES

Professor Elizabeth McInnes is Professor of Nursing at St Vincent's Hospital Melbourne and is Deputy Director at the Nursing Research Institute (NRI); a partnership between St Vincent's Hospital Melbourne, St Vincent's Health Sydney and ACU.

Her main research areas include improving evidence uptake and evaluating clinician behaviour change strategies in the areas of pressure injury prevention, stroke and hospital acquired complications. She has experience in trials, systematic reviews, process evaluations and qualitative research.



ASSOCIATE PROFESSOR ROBYN HORNER

Associate Professor Robyn Horner is a teaching and research academic within the School of Theology at ACU, and a member of the Institute for Religion and Critical Inquiry (IRCI). From 2010 until 2015, she held the position of Associate Dean (Learning and Teaching) in the Faculty of Theology and Philosophy. Her research relates to finding new ways of thinking theologically in contemporary Western contexts. She is currently co-editing *The Experience of Atheism: Phenomenology, Metaphysics and Religion* with Claude Romano (forthcoming with Bloomsbury), and completing the final edits for her third monograph: *Experience of God: A Phenomenology of Revelation*.

Our institutes

Our research institutes make an impact around the world, across industries and communities, and in the lives of individuals. Education, health, and theology and philosophy are their core research priorities, and all are founded on the principles of social justice and the common good.

INSTITUTE FOR POSITIVE PSYCHOLOGY AND EDUCATION

The Institute for Positive Psychology and Education (IPPE) tackles the significant issues of our time through positive psychology. We conduct multi-disciplinary research to address critical educational and psychosocial issues, and translate theory to inform effective policy and practice. Our work demonstrates how individuals, communities and organisations cannot just succeed but flourish and thrive.

acu.edu.au/ippe

INSTITUTE FOR RELIGION AND CRITICAL INQUIRY

The Institute for Religion and Critical Inquiry (IRCI) provides a vibrant hub for higher research degrees. It promotes interdisciplinary and collaborative research from multiple disciplinary perspectives revolving around three research programs: Biblical and Early Christian Studies, Medieval and Early Modern Studies, and Religion and Theology. Focusing on Christian thought and practice, we explore inter-relationships between religion and its cultural contexts, and contribute to contemporary theological, philosophical, ethical, and political debates. Our scholars are leaders or emerging leaders in their fields. IRCI houses a number of innovative research projects led by chief investigators from ACU and leading international universities such as Durham, KU Leuven, Boston College, and Yale.

acu.edu.au/irci

INSTITUTE FOR LEARNING SCIENCES AND TEACHER EDUCATION

Education, health, and wellbeing predicate life opportunities. Our aim at the Institute for Learning Sciences and Teacher Education (ILSTE) is to improve educational outcomes for children, teachers and the wider community through socially relevant and ethically committed research with our research partners.

Our studies span early childhood through to higher education and we lead the way in cutting-edge interventions, practice and use of technology. Our research builds evidence-based knowledge and identifies solutions that improve engagement, learning and quality of life for all people, especially considering the diversity of learning environments, teaching skills, technological innovations and learner diversity.

acu.edu.au/ilste

MARY MACKILLOP INSTITUTE FOR HEALTH RESEARCH

The Mary MacKillop Institute for Health Research (MMIHR) works towards better health outcomes in Australia and around the world. We collaborate with local and international industry, community and other university groups to address critical public health issues and deliver innovative programs that transform lives.

In the most recent Excellence in Research for Australia (ERA) rankings, we achieved well above world standard for our research in the areas of human movement and sports science, and public health and health services.

acu.edu.au/mmihhr

Postgraduate study pathways

In general, postgraduate study falls into two main categories: coursework and research.

COURSEWORK

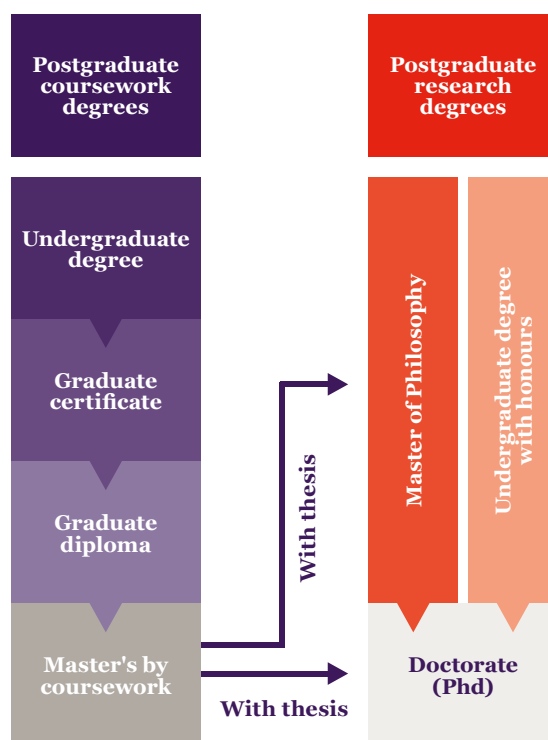
- Programs are generally six months to two years full-time (or equivalent part-time).
- You can expect classes (including online classes), units, and set assessments, similar to an undergraduate degree.
- To apply you usually need to have completed an undergraduate degree first. However, professional experience can also be taken into account.
- The graduate certificate, graduate diploma and master's degree are connected and can build on each other.
- If you're considering a master's degree but don't initially qualify, you may be accepted into the graduate certificate or diploma in the same area of study.
- If you choose to study a master's degree but your circumstances change, you may be able to exit the degree early with the relevant graduate certificate or graduate diploma.
- Coursework programs are ideal for gaining new skills and getting ahead in your career.

RESEARCH

- Programs are generally two to three years full-time (or equivalent part-time).
- You can expect independent research and exploration of original ideas under the guidance of a supervisor.
- To apply you usually need to have completed an undergraduate degree with honours, or a master's (with thesis).
- ACU offers supervised research at either master's or doctoral level.
- Research programs are ideal for making a new contribution to an academic field. They can be a pathway to research or an academic career, or help you get ahead at work.

Honours degrees are also available. They are a one-year degree for high-achieving students who have already completed a bachelor degree, and allow you to build upon your knowledge, develop research skills, and work closely with an academic expert. The main focus of the degree is to produce a research thesis under supervision from experienced academic staff. Some four-year bachelor programs have honours embedded into the third and fourth years.

EXAMPLE PATHWAYS THROUGH POSTGRADUATE STUDY



If you're studying at another university and would like to switch to ACU, or you have relevant knowledge and skills acquired in the workplace, you may be able to get credit towards your degree.

acu.edu.au/priorlearning

Fees and scholarships

There are many options to help you manage the cost of study. Tuition fees depend on the course you enrol in, and there are two placement offer types: fee-paying place, and Commonwealth supported place (CSP).



FEE-PAYING PLACE

A fee-paying place is not subsidised by the government, so you pay the full cost of the course. As a domestic fee-paying student, you may be eligible to defer payment of your fees through the FEE-HELP government loan scheme. Repayment of the loan occurs through the tax system once your income exceeds the minimum threshold. Your employer may also consider assisting with the cost of study if the course is related to your current position.

studyassist.gov.au



COMMONWEALTH SUPPORTED PLACE (CSP)

A small number of postgraduate courses at ACU offer CSPs, where the government pays a proportion of tuition costs. The remainder of the fees are paid by the student, but eligible students can defer their payment through the HECS-HELP government loan scheme. Repayment of the loan occurs through the tax system once your income exceeds the minimum threshold.

studyassist.gov.au



RESEARCH TRAINING PROGRAM FEES OFFSET SCHOLARSHIPS

If you are enrolling in a master's by research or doctorate program at ACU, you may be exempt from paying tuition fees. Our Research Training Program Fees Offset Scholarships are for high-achieving domestic students whose research proposal aligns with our priority areas.

acu.edu.au/research-scholarships



FACULTY ALUMNI REBATE

If you're an ACU graduate, you may be eligible for a 10 per cent rebate on postgraduate fees.

acu.edu.au/alumni-rebate



POSTGRADUATE COURSEWORK SCHOLARSHIPS

We offer scholarships to help support you financially during your studies. Use our online scholarships portal to find the ones that are right for you.

acu.edu.au/scholarships



RESEARCH TRAINING PROGRAM STIPEND SCHOLARSHIPS

We offer competitive scholarships with a stipend to help support you financially during your research, and to reward outstanding academic achievement. For international students, this includes a tuition fee waiver and an Overseas Health Care Policy.

acu.edu.au/research-scholarships

Got questions? We're waiting with the answers.

acu.edu.au/askacu

Applying to ACU

Postgraduate coursework degrees

- 1** Choose the course you would like to study by browsing this guide and visiting acu.edu.au/courses for more details.
- 2** Check important dates and application requirements carefully – some courses also require supporting documentation.
- 3** Check out the postgraduate scholarships available at acu.edu.au/scholarships
- 4** Apply online direct to ACU at acu.edu.au/courses
- 5** Accept your offer and enrol.



For more information on how to apply for postgraduate coursework degrees, visit acu.edu.au/apply

If you still have questions or need help with your application, visit acu.edu.au/askacu

Postgraduate research degrees

Application to ACU higher degrees by research, including the Master of Philosophy and Doctor of Philosophy, is by direct application to Candidature Services at ACU.

- 1** Choose your course at acu.edu.au/research/apply
- 2** Check entry requirements and your eligibility.
- 3** Find a research supervisor at rexr.acu.edu.au
- 4** Check application closing dates.
- 5** Complete your application.
- 6** Gather your documents.
- 7** Submit your completed application.



For more information and to apply for postgraduate research degrees, visit acu.edu.au/research/become-a-research-candidate

If you still have questions or need help with your postgraduate research application, contact res.cand@acu.edu.au

Allied health

**A world of wellbeing
is a world of well beings.**

Allied health practitioners help us live life to the fullest. You can diagnose, treat, and rehabilitate patients, and help improve their quality of life.

MENTAL HEALTH PROGRAMS

Our suite of mental health programs has been developed specifically for allied health professionals in regular contact with people facing mental health issues. Our programs develop graduates with knowledge and skills at a specialist and advanced level in mental health. The programs offer:

- opportunities for allied health professionals who work with clients experiencing mental health issues, but have no formal postgraduate mental health qualification
- a shift in focus from acute inpatient treatment to that of recovery-orientated, trauma-informed care philosophy and content
- a specified unit in cognitive behavioural therapy
- professional development opportunities to keep pace with changes to mental health legislation, policy and service delivery
- articulation between the graduate certificate, graduate diploma and master's programs
- opportunities to build the required knowledge, skills, and competencies for the workforce
- preparation to respond to the needs of consumers and carers.

2020 tuition fees: **Graduate certificate:** Average first year fee (PT): \$9,744 fee-paying (indicative only). **Graduate diploma/master:** Average first year fee (FT): \$19,252 fee-paying (indicative only).

Entry requirements for 2021: To apply for this course, you must:

- have completed a bachelor degree (or higher) in a health discipline
- provide written confirmation from your employer that your workplace duties bring you into regular contact with people who have mental health problems.

Career paths: Clinician; case manager/worker; team leader; service manager; triage manager.

ACU also offers postgraduate mental health nursing programs for registered nurses, see page 37 for details.

Master of Mental Health

📍 Online 🕒 1.5 yrs FT (or equivalent PT)

Graduate Diploma in Mental Health

📍 Online 🕒 1 yr FT (or equivalent PT)

Graduate Certificate in Mental Health

📍 Online 🕒 1 yr PT



ACU North Sydney

REHABILITATION PROGRAMS

Master of Rehabilitation

 Brisbane, Melbourne*, North Sydney* (with an on-campus component at the Brisbane Campus)  1.5 yrs FT (or equivalent PT)

The Master of Rehabilitation suite comprises four discipline and one non-discipline nested programs with three exit points. The non-discipline program is available to clinicians of any discipline.

The four discipline programs (listed on pages 19 – 21) are occupational therapy, speech pathology, gerontological physiotherapy and neurological physiotherapy.

The Graduate Certificate in Rehabilitation prepares the clinician to be an enhanced evidence based clinician within an interprofessional team. The course has four units: two units focus on enhancing rehabilitation knowledge and skills within an interprofessional team and two elective units enable the student to customise their learning to their relevant context and learning needs.

The non-discipline Graduate Diploma in Rehabilitation builds on the previous learning with advanced knowledge and skills in relevant practice areas. Clinical leadership is further developed and clinical research is introduced.

The Master of Rehabilitation brings the clinical expert, clinical leadership and clinical research components together. Further clinical specialist skills and knowledge are developed and a workplace-based clinical research project is implemented.

2020 tuition fees: **Graduate certificate:** Average first year fee (PT): \$10,141 fee-paying (indicative only). **Graduate diploma:** Average first year fee (FT): \$20,840 fee-paying (indicative only). **Master:** Average first year fee (FT): \$23,276 fee-paying (indicative only).

Entry requirements for 2021: To be eligible for admission to the Master of Rehabilitation, an applicant must:

- have a bachelor degree from an accredited three-year program in a health discipline or equivalent to enter the Graduate Certificate in Rehabilitation non-specialty pathway with a minimum grade point average (GPA) of 4.6 on the ACU 7-point scale; and
- have a minimum of one year clinical experience in the appropriate discipline for entry to the graduate certificate; or a minimum of two years clinical experience in the appropriate discipline for entry to the graduate diploma or master's; and
- be employed in the field unless otherwise approved by the course coordinator
- demonstrate suitability to undertake the course.

Additional admission requirements for those wishing to enrol in one of the four discipline programs is provided on pages 19 – 21.

Career paths: Graduates will work in a range of health provider settings including but not limited to: public or private health care provider in acute wards and rehabilitation settings; private practice in the field of rehabilitation; aged care health services; transition care community rehabilitation and long-term care settings; state, federal and local government in policy development or implementation; health carer groups; health care based research. Roles may include clinician; case worker; team leader; consultant; researcher.

Graduate Diploma in Rehabilitation

 Brisbane, Melbourne*, North Sydney* (with an on-campus component at the Brisbane Campus)  1 yr FT (or equivalent PT)

Graduate Certificate in Rehabilitation

 Brisbane, Melbourne*, North Sydney* (with an on-campus component at the Brisbane Campus), online through Open Universities Australia  1 yr PT

*Subject to student numbers and location of staff with relevant expertise. Students enrolled at these campuses may be required to attend residential schools on the Brisbane Campus.

Master of Rehabilitation (Occupational Therapy)

📍 Brisbane, Melbourne*, North Sydney* (with an on-campus component at the Brisbane Campus) ⌚ 1.5 yrs FT (or equivalent PT)

The Master of Rehabilitation (Occupational Therapy) consists of coursework units with discipline-specific streams. You will undertake advanced occupational therapy practicums related to home, work and leisure participation, upper limb management of older adults/acquired brain injury (ABI), and cognitive rehabilitation related to age and neurological disorders. The program concludes with a clinical research project related to aged or neurological disorders designed to impact on patient care.

2020 tuition fees: **Graduate certificate:** Average first year fee (PT): \$10,141 fee-paying (indicative only). **Graduate diploma:** Average first year fee (FT): \$20,840 fee-paying (indicative only). **Master:** Average first year fee (FT): \$23,276 fee-paying (indicative only).

Entry requirements for 2021: To apply for this course, you must:

- have completed a bachelor degree from an accredited four-year program in occupational therapy or equivalent to enter the graduate certificate pathway with a minimum grade point average (GPA) of 4.6 on the ACU 7 point scale; and

- have a minimum of two years' clinical experience in the appropriate discipline; and
- hold current registration with the discipline-specific national allied health registration board or required authority in Australia, or registration authority in country of current practice.

This program is open to occupational therapists.

Practical experience: This program involves interprofessional learning with residential intensives and webinars, in conjunction with case-based online units and evidence-based applications. Discipline-specific workshops, workplace practicums and clinical research will foster advanced knowledge, skills, and applications for optimal management of older adults, people ageing with a disability, and those with neurological disorders/ABI.

Career paths: Rehabilitation team leader; rehabilitation consultant; or allied health team leader.

* Subject to student numbers and location of staff with relevant expertise. Students enrolled at these campuses may be required to attend residential schools on the Brisbane Campus.

Graduate Diploma in Rehabilitation

📍 Brisbane, Melbourne*, North Sydney* (with an on-campus component at the Brisbane Campus) ⌚ 1 yr FT (or equivalent PT)

Graduate Certificate in Rehabilitation (Occupational Therapy)

📍 Brisbane, Melbourne*, North Sydney* (with an on-campus component at the Brisbane Campus) ⌚ 1 yr PT



Master of Rehabilitation (Speech Pathology)

 Brisbane, Melbourne*, North Sydney* (with an on-campus component at the Brisbane Campus)  1.5 yrs FT (or equivalent PT)

The Master of Rehabilitation (Speech Pathology) is made up of coursework units with discipline-specific streams. You will undertake advanced speech pathology practicums related to swallowing function, motor speech and voice, and communication participation through rehabilitation.

2020 tuition fees: **Graduate certificate:** Average first year fee (PT): \$10,141 fee-paying (indicative only). **Graduate diploma:** Average first year fee (FT): \$20,840 fee-paying (indicative only). **Master:** Average first year fee (FT): \$23,276 fee-paying (indicative only).

Entry requirements for 2021: To apply for this course, you must:

- have completed a bachelor degree from an accredited four-year program in speech pathology or equivalent to enter the graduate certificate pathway with a minimum grade point average (GPA) of 4.6 on the ACU 7 point scale; and

- have a minimum of two years' clinical experience in the appropriate discipline; and
- have obtained and maintain eligibility to practice, and membership with Speech Pathology Australia; or registration authority in the country of current practice.

Practical experience: This program involves interprofessional learning with residential intensives and webinars, in conjunction with case-based online units and evidence-based applications.

Discipline-specific workshops, workplace practicums and clinical research will foster advanced knowledge, skills, and applications for optimal management of older adults, people ageing with a disability and those with neurological disorders/acquired brain injury (ABI).

Career paths: Rehabilitation team leader; rehabilitation consultant; or allied health team leader.

Graduate Diploma in Rehabilitation

 Brisbane, Melbourne*, North Sydney* (with an on-campus component at the Brisbane Campus)  1 yr FT (or equivalent PT)

Graduate Certificate in Rehabilitation (Speech Pathology)

 Brisbane, Melbourne*, North Sydney* (with an on-campus component at the Brisbane Campus)  1 yr PT

Master of Rehabilitation (Gerontological Physiotherapy)

 Brisbane, Melbourne*, North Sydney* (with an on-campus component at the Brisbane Campus)  1.5 yrs FT (or equivalent PT)

The Master of Rehabilitation (Gerontological Physiotherapy) is made up of coursework units with discipline specific streams. You will undertake advanced physiotherapy practicums related to balance, mobility and gait disorders, upper limb problems related to ageing, pain and neurological disorders, and vestibular rehabilitation for older adults and those with specific vestibular impairments from peripheral and CNS dysfunction. The program concludes with a clinical research project related to rehabilitation of older adults that is designed to impact on patient care.

2020 tuition fees: **Graduate certificate:** Average first year fee (PT): \$10,141 fee-paying (indicative only). **Graduate diploma:** Average first year fee (FT): \$20,840 fee-paying (indicative only). **Master:** Average first year fee (FT): \$23,276 fee-paying (indicative only).

Entry requirements for 2021: To apply for this course, you must:

- have completed a bachelor degree from an accredited four-year program in physiotherapy or equivalent to enter the graduate certificate pathway with a minimum grade point average (GPA) of 4.6 on the ACU 7 point scale; and

- have a minimum of two years' clinical experience in the appropriate discipline; and
- hold current registration with the discipline-specific national allied health registration board or required authority in Australia, or registration authority in country of current practice.

Accreditation/professional recognition: Graduates of the Master of Rehabilitation (Gerontological Physiotherapy) will be eligible for the Title of APA Gerontological Physiotherapist.

Practical experience: This program involves interprofessional learning with residential intensives and webinars, in conjunction with case-based online units and evidence-based applications. Discipline-specific workshops, workplace practicums and clinical research will foster advanced knowledge, skills, and applications for optimal management of older adults, people ageing with a disability and those with neurological disorders.

Career paths: Rehabilitation team leader; rehabilitation consultant; allied health team leaders; gerontological physiotherapist.

* Subject to student numbers and location of staff with relevant expertise. Students enrolled at these campuses may be required to attend residential schools on the Brisbane Campus.

Master of Rehabilitation (Neurological Physiotherapy)

📍 Brisbane, Melbourne*, North Sydney* (with an on-campus component at the Brisbane Campus) ⌚ 1.5 yrs FT (or equivalent PT)

The Master of Rehabilitation (Neurological Physiotherapy) is made up of coursework units with discipline-specific streams. You will undertake advanced physiotherapy practicums related to balance, mobility and gait disorders associated with acquired brain injuries (ABI), upper limb management of aged and neurological disorders, and vestibular rehabilitation for older adults and those with specific vestibular impairments from peripheral and CNS dysfunction. The program concludes with a clinical research project related to rehabilitation of people with ABI that is designed to impact on patient care.

2020 tuition fees: **Graduate certificate:** Average first year fee (PT): \$10,141 fee-paying (indicative only). **Graduate diploma:** Average first year fee (FT): \$20,840 fee-paying (indicative only). **Master:** Average first year fee (FT): \$23,276 fee-paying (indicative only).

Entry requirements for 2021: To apply for this course, you must:

- have completed a bachelor degree from an accredited four-year program in physiotherapy or equivalent to enter the graduate certificate pathway with a minimum grade point average (GPA) of 4.6 on the ACU 7 point scale; and

- have a minimum of two years' clinical experience in the appropriate discipline; and
- hold current registration with the discipline-specific national allied health registration board or required authority in Australia, or registration authority in country of current practice.

Accreditation/professional recognition: Graduates of the Master of Rehabilitation (Neurological Physiotherapy) will be eligible for the Title of APA Neurological Physiotherapist.

Practical experience: This program involves interprofessional learning with residential intensives and webinars, in conjunction with case-based online units and evidence-based applications. Discipline-specific workshops, workplace practicums and clinical research will foster advanced knowledge, skills, and applications for optimal management of people ageing with a disability and those with neurological disorders/ABI.

Career paths: Rehabilitation team leader; rehabilitation consultant; allied health team leader; neurological physiotherapist.

**Subject to student numbers and location of staff with relevant expertise. Students enrolled at these campuses may be required to attend residential schools on the Brisbane Campus.*

Graduate Diploma in Rehabilitation

📍 Brisbane, Melbourne*, North Sydney* (with an on-campus component at the Brisbane Campus) ⌚ 1 yr FT (or equivalent PT)

Graduate Certificate in Rehabilitation (Physiotherapy)

📍 Brisbane, Melbourne*, North Sydney* (with an on-campus component at the Brisbane Campus) ⌚ 1 yr PT



Master of Social Work

📍 Brisbane, Canberra, Strathfield 🕒 2 yrs FT (or equivalent PT)

The Master of Social Work is a vibrant and challenging program. You will be encouraged to build on your existing knowledge and experience, and gain a sound understanding of social work values and practice approaches. The course emphasises social justice, human rights, and achieving the best possible outcomes for the most marginalised and disadvantaged members of our community. You will be taught by leading social work practitioners and academics, with a strong focus on experiential learning.

2020 tuition fees: Average first year fee (FT): \$6,680 Commonwealth supported place (indicative only).

Entry requirements for 2021: To apply for this course, you must have completed:

- an undergraduate degree from a recognised university in a related field which includes a minimum of eight units (two full semesters) of study in the social and behavioural sciences.

These units may include psychology, sociology, anthropology, policy studies, history, law, health, education, nursing, disability studies, philosophy, Indigenous studies, culture and human diversity, media studies, gender studies, social theory and population studies, and:

- at least one unit of study in human behaviour; and
- one unit of study in sociology in your undergraduate degree.

Accreditation: This is an Australian Association of Social Workers (AASW) accredited qualification. It is an entry qualification into the social work profession and meets the Australian Social Work Education and Accreditation Standards (ASWEAS).

Professional experience: Field education is a core element of the program and a major part of your professional identity development. It provides an opportunity for you to observe, question and model social work behaviours, translate social work theory into practice, and apply knowledge drawn from other units of study. The course includes a total of 1,000 hours of supervised field education and training over two years.

Career paths: Our social work graduates are highly regarded by employers. You will be prepared for work in a variety of areas, such as community development, group work, family work, case-management, policy analysis and development, research, social action, and program planning.

Social workers may also work in different areas of practice, including: family work, youth and child, welfare services, medical and health services, disability services, psychiatric and general mental health, community services, aged care, income support, mediation and research.

Students missing the required human behaviour or sociology unit can undertake a non-award unit to meet the prerequisite.



The Sacred Heart Homework Club

Business

Business. But not as usual.

Our graduates are leaders who understand that the business decisions they make will affect people and communities. And that's why we will prepare you with business strategies and frameworks to tackle global and ethical problems that create positive and sustainable change.

Master of Business Administration

📍 On-campus at North Sydney and Melbourne. Face-to-face and/or via video conference at an ACU campus or another location. Online through Open Universities Australia 🕒 1–2 years FT depending on credit granted for prior learning, or equivalent PT.

ACU offers three distinct MBAs to meet your needs wherever you are in your career journey. Our courses provide analytical tools for decision-making and will enhance your leadership skills to further careers in commerce, government, and a wide range of not-for-profit organisations.

Our two-year, face-to-face MBA is designed for aspiring leaders new to the workforce. Our online MBA is for busy emerging leaders who need the flexibility to study when and where they desire. And our Executive MBA (EMBA) is designed for senior managers (learn more at acu.edu.au/emba).

Our unique structure with four open electives allows you to create your own specialist MBA in an industry or professional area of your choice.

And if life circumstances mean you can't finish the full program, all MBA options allow an early exit with a graduate certificate or graduate diploma.

The MBA on campus includes 12 specified units, and a further four units from a business specialisation or from other ACU postgraduate disciplines.

The online MBA includes eight specified units and a further four elective units.

2020 tuition fees: Average first year fee (FT): \$26,904 fee-paying (indicative only).

Entry requirements for 2021: To be eligible for admission to the course, an applicant must have completed the following

prerequisites:

- a bachelors degree in any discipline and two years post-graduation full time work experience; or
- a graduate certificate in any discipline and a minimum of two years full time work experience; or
- a minimum of five years' full-time work experience outlined in a portfolio demonstrating knowledge, experience, and skills suitable to the level required for participation in the program.

Entry pathways: Applicants for a master's degree who hold an Australian bachelor degree or equivalent in a business-related (cognate) discipline may be eligible to apply for advanced standing for up to four foundation units (40 credit points) of the course. Applicants who hold a specialist graduate certificate (completed within the last 10 years) can receive recognition for their prior learning.

Career paths: Management consultant; CEO; managing director; senior executive; general manager.

You can choose four units from any area for this qualification.

Did you know we also offer a suite of Executive Education courses, including an Executive Master of Business Administration? Learn more on page 72.

BUILDING YOUR MBA			
	BUSINESS FOUNDATION UNITS	BUSINESS SPECIFIED UNITS	SPECIALISATIONS
		ALL UNITS	ANY FOUR UNITS OF POSTGRADUATE STUDY
On campus 160 credit points	<ul style="list-style-type: none"> • Accounting for decision making <i>Or</i> • Money management <i>And</i> • Business communication for the 21st century • Managing market environments • Organisational dynamics and behaviour 	<ul style="list-style-type: none"> • Corporate finance • Corporate governance and risk management • Entrepreneurship • Strategic management for sustainability • Research methods • Ethical leadership • Managerial marketing • Data analysis and interpretation 	<ul style="list-style-type: none"> • General management <i>Or</i> • ACU specialisations including: <ul style="list-style-type: none"> • Accounting • Finance (North Sydney) • Information technology (North Sydney) • Occupational health, safety and environmental management <i>Or</i> • Any other ACU graduate certificate* such as: <ul style="list-style-type: none"> • Health administration • Educational leadership • Clinical nursing <i>Or</i> • Any 4 approved postgraduate units
Online through Open Universities Australia 120 credit points	<ul style="list-style-type: none"> • Accounting for decision making <i>Or</i> • Money management 	<ul style="list-style-type: none"> • Corporate finance • International business environment • Entrepreneurship • Strategic management for sustainability • Ethical leadership • Managerial marketing • Organisational dynamics and behaviour 	<ul style="list-style-type: none"> • General management <i>Or</i> • Any four postgraduate single subjects offered through OUA

*Students must meet the eligibility requirements for the graduate certificate.



"I chose to do my master's degree at ACU because it is one of the best universities in Australia. I have learnt so much. My MBA has given me new insights into business, people and the way things run."

Juan
Master of Business Administration student



Master of Finance

📍 North Sydney 🕒 2 yrs FT (or equivalent PT)

This course is designed for experienced managers who aspire to enhance their careers in finance and/or financial services. There are 15 specified units that will provide solid grounding in financial planning, superannuation and retirement planning, estate planning, ethical leadership, finance methods, international finance, entrepreneurial finance, financial modelling and risk analysis, risk management, responsible investment management, real estate finance, commercial and corporations law, taxation law and accounting. Another elective unit can be chosen from the ACU postgraduate business units.

2020 tuition fees: Average first year fee (FT): \$27,726 fee-paying (indicative only).

Entry requirements for 2021: To be eligible for admission to the course, you must have completed:

- the equivalent of an Australian bachelor degree in any discipline (the equivalent of an Australian bachelor degree in a related discipline will be eligible for up to four units credit); or

- a graduate certificate in a related discipline.

Professional recognition: This master's program is accredited by the Financial Planning Education Council. The course is approved by the Financial Adviser Standards and Ethics Authority.

Career paths: CEO; chief financial officer; financial advisor/planner; financial controller; financial director; investment consultant; wealth manager.

To be flexible around your work commitments, our Master of Finance classes are scheduled during the evening.

Graduate Diploma in Financial Planning

📍 North Sydney, online through Open Universities Australia 🕒 1 yr FT (or equivalent PT)

The Graduate Diploma in Financial Planning allows you to specialise in personal financial planning. You will be able to advance your career through a postgraduate qualification that leads to professional recognition and marketability.

The Graduate Diploma in Financial Planning articulates into the Master of Finance. You can choose to study online from anywhere in Australia or face-to-face at our North Sydney Campus.

2020 tuition fees: Average first year fee (FT): \$28,000 fee-paying (indicative only).

Entry requirements for 2021: To be eligible for admission to the course, you must have completed:

- equivalent of an Australian bachelor degree in any discipline; or
- at least five years of industry experience in a relevant role.

Professional recognition: The Graduate Diploma in Financial Planning is accredited by the Financial Planning Education Council. This award meets the education requirements of FASEA for financial planners.

Career paths: Financial adviser; financial planner; investment consultant; wealth manager.

ACU has an articulation agreement with the Financial Planning Association of Australia (FPA) for Certified Financial Planners (CFPs). CFPs may get the maximum credit of four subjects, equivalent to 40 credit points.

Master of Professional Accounting

 Melbourne, North Sydney  2 yrs FT (or equivalent PT)

This course is designed to provide the competencies necessary to pursue a rewarding and successful career in accounting. You are taught essential accounting principles, practices, and techniques, and learn how to apply these to a variety of situations, including auditing, financial reporting, internal controls, and management accounting.

2020 tuition fees: Average first year fee (FT): \$28,000 fee-paying (indicative only).

Entry requirements for 2021: To be eligible for admission to the course, you must have completed:

- the equivalent of an Australian bachelor degree in any discipline (the equivalent of an Australian bachelor degree in a related discipline will be eligible for up to four units credit); or
- a graduate certificate in a related discipline.

Professional recognition: Upon graduation from the master's program, you will have met the minimum requirements for entry into CPA Australia, Chartered Accountants Australia and New Zealand, and the Institute of Public Accountants.

Career paths: Accountant; financial manager; financial adviser; auditor; financial planner; chief financial officer; financial assurance and compliance; manager; budget manager; tax agent; investment analyst.

This course has been specifically designed for graduates of non-business or accounting degrees who aspire to become qualified accountants.

OCCUPATIONAL HEALTH, SAFETY AND ENVIRONMENTAL MANAGEMENT PROGRAMS

ACU's suite of occupational health, safety and environmental management (OSHE) accredited courses are designed for practicing and aspiring OHSE practitioners who seek certification as well as professionals and business leaders who seek to improve OHSE practices and/or compliance in their organisations.

More than just an occupational health and safety degree, you will learn about physical and psychosocial hazards in occupational environments, risk assessment, applying control measures and monitoring their effectiveness. You will also study environmental impact assessment, environmental and safety law, managerial skills and business administration.

Master of Occupational Health, Safety and Environmental Management

 Online through Open Universities Australia  1.5 yrs FT (or equivalent PT)

2020 tuition fees: Average first year fee (FT): \$25,000 fee-paying (indicative only).

Entry requirements for 2021: To be eligible for admission to the course, an applicant must have completed the following prerequisites:

- bachelor degree in a related discipline; or
- bachelor degree in a different discipline and evidence of a minimum two years industry experience; or
- graduate diploma in occupational health, safety and environmental management.

Professional recognition: The master's program, together with the Graduate Diploma in Occupational Health, Safety and Environmental Management, are accredited with the

Australian OHS Accreditation Board. Students who complete the Graduate Certificate in Occupational Health, Safety and Environmental Management can articulate into the accredited graduate diploma and master's programs.

Career paths: Certified OHSE professionals; certified WHS professionals; OHSE and WHS inspectors; OHSE practitioners; OHSE managers; OHSE directors; OHSE management consultants; OHSE executives.

Graduate Diploma in Occupational Health, Safety and Environmental Management

🕒 1 yr FT (or equivalent PT)

2020 tuition fees: Average first year fee (FT): \$25,000 fee-paying (indicative only).

Entry requirements for 2021: To be eligible for admission to the course, an applicant must have completed the following prerequisites:

- bachelor degree in a related discipline; or
- bachelor degree in a different discipline and evidence of a minimum two years industry experience; or
- Graduate Certificate in Occupational Health, Safety and Environmental Management, or a related award.

Professional recognition: The master's program, together with the Graduate Diploma in Occupational Health, Safety and Environmental Management, are accredited with the

Australian OHS Accreditation Board. Students who complete the Graduate Certificate in Occupational Health, Safety and Environmental Management can articulate into the accredited graduate diploma and master's programs.

Career paths: This degree will prepare you for a professional-level position in OHSE. OHSE professional practitioners are in demand because of the increasing focus on the management of occupational health, safety and environmental processes in accordance with the law and regulatory requirements.

Graduate Certificate in Occupational Health, Safety and Environmental Management

🕒 6 mths PT

2020 tuition fees: Average first year fee (PT): \$14,000 fee-paying (indicative only).

Entry requirements for 2021: To be eligible for admission to the course, an applicant must have completed the following prerequisites:

- bachelor degree in a relevant discipline; or
- bachelor degree in a different discipline and evidence of a minimum two years industry experience; or
- at least five years of relevant professional experience.

Entry pathways: In special circumstances, applicants can submit a proposal alongside a formal application, demonstrating their knowledge, experience, and skills are such that they are likely to succeed in the program.

Career paths: This degree will prepare you for a professional-level position in OHSE. OHSE professional practitioners are in demand because of the increasing focus on the management of occupational health, safety and environmental processes in accordance with the law and regulatory requirements.

You can enter this program on the basis of relevant professional experience.

Information technology

**Explore technology.
Find humanity.**

Develop your technical, communication and critical thinking skills to stay at the forefront of this ever-changing industry and advance your career in information technology.

Master of Information Technology

📍 North Sydney, Melbourne 🕒 2 years FT (or equivalent PT)

The Master of Information Technology will provide you with the communication, critical thinking and technical skills needed to advance your career in information and communications technology. It provides you with an opportunity to specialise in one of the following areas:

- applications development
- business analysis.

You will be required to apply your learning to workplace and industry-based projects.

2020 tuition fees: Average first year fee (FT): \$28,000 fee-paying (indicative only).

Entry requirements for 2021: To be eligible for admission to the course, you must have completed:

- the equivalent of an Australian bachelor degree in any discipline (the equivalent of an Australian bachelor degree in a related discipline will be eligible for up to four units credit); or
- a graduate certificate in a related discipline.

Accreditation: This degree is accredited by the Australian Computer Society (ACS).

Practical experience: Workplace and industry-based projects are available for students with organisations such as CISCO.

Career paths: IT consulting and project management; IT training and education; network management; business systems analysis; database administration; information systems management; software engineering; technical and network support.

Gain a fully accredited qualification which is highly regarded by industry.



Law

Embrace law to fight injustice.

Our law programs open the door to a career helping others live in a safe, just and free society. By studying law with us, you'll gain the skills you need to make an impact.

Bachelor of Laws (Graduate Entry)

Melbourne, North Sydney ⌚ 3 yrs FT (or equivalent PT)

The Bachelor of Laws (Graduate Entry) is a three year degree designed for experienced students who have completed a previous bachelor level degree. Typically, you develop specialisations in different fields of law throughout your career, including criminal, family, environmental, corporate, international trade and entertainment law.

2020 tuition fees: Average first year fee (FT): \$11,152 Commonwealth supported place (indicative only).

Entry requirements for 2021: To be eligible for admission to the course, an applicant must have successfully completed a recognised three-year bachelor degree in any field of study

Professional recognition: This course has been specifically developed to meet the requirements for admission to practice law. The course has been approved in Victoria and New South Wales, and is recognised for admission as a legal practitioner in other states and territories in Australia.

Practical experience: As part of this degree, you will complete 80 hours of pro bono work.

Career paths: Private practice as a solicitor or barrister; legal officer in the public sector; in-house counsel for a wide range of organisations including corporations, regulatory authorities and NGOs.

Your degree includes five elective units, allowing you to explore specialist law topics of interest to you. In addition, your degree attracts CSP funding.

Graduate Diploma in Australian Migration Law and Practice

Online ⌚ 1 yr FT (or equivalent PT)

Migration law is a dynamic and rewarding area of professional practice. If you hold a bachelor degree (in any discipline) or equivalent experience, you may be eligible to undertake the ACU Graduate Diploma in Australian Migration Law and Practice. The diploma provides you with the knowledge, understanding and skills you need to work as a migration agent in Australia.

2020 tuition fees: Average first year fee (FT): \$21,600 fee-paying (indicative only).

Entry requirements for 2021: To be eligible for admission to the course, you must have completed the following prerequisites:

- bachelor degree in any discipline; or
- equivalent professional experience in a relevant role.

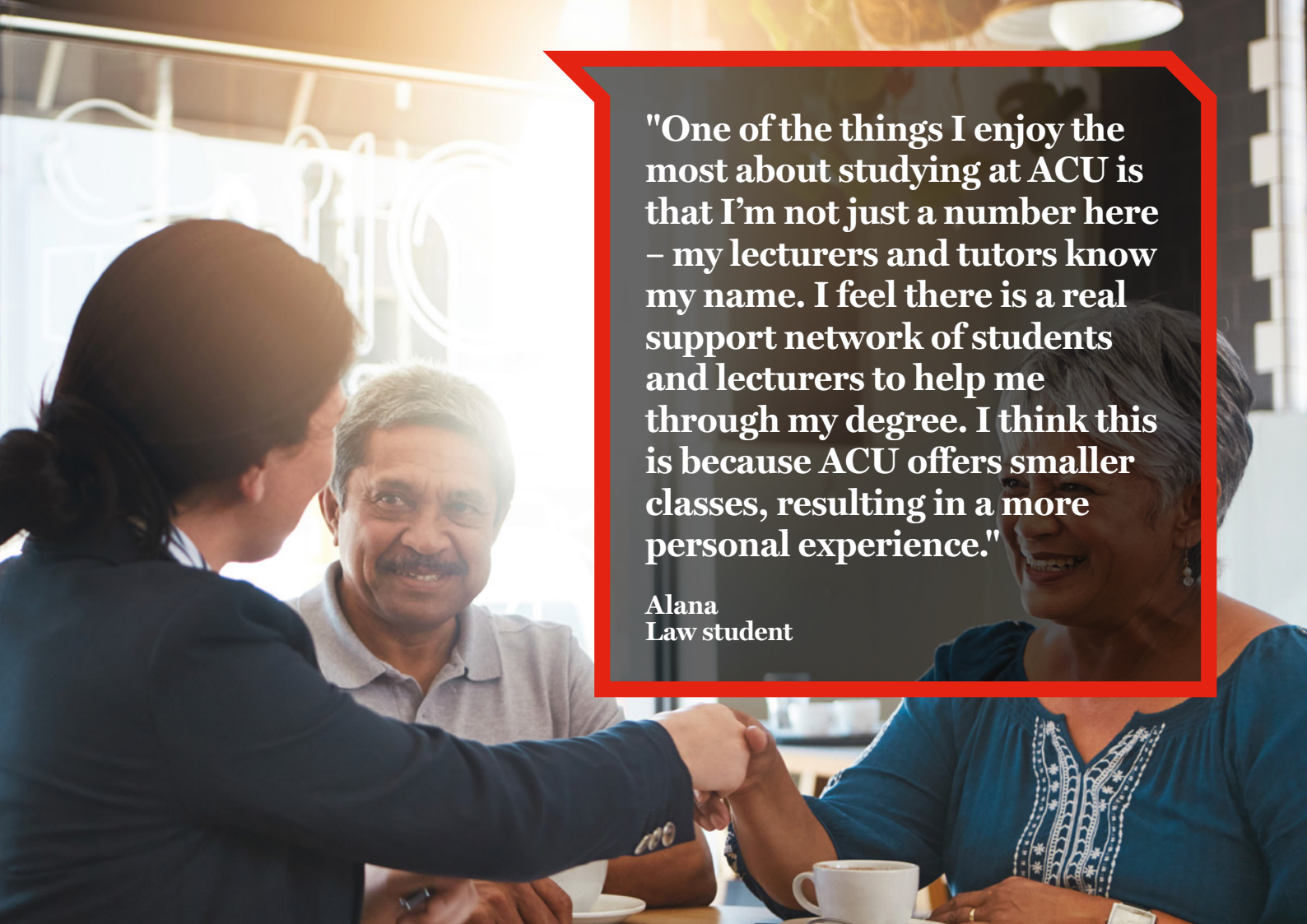
Professional recognition: Upon successful completion of the diploma and capstone exam administered by the Office of the Migration Agents Registration Authority (OMARA), graduates may seek registration to practice as a Registered Migration Agent. There are additional requirements for registration as a migration agent.

Career paths: Migration agent.

This is one of only six qualifications in Australia recognised by the Office of the Migration Agents Regulatory Authority (OMARA).



ACU North Sydney



"One of the things I enjoy the most about studying at ACU is that I'm not just a number here – my lecturers and tutors know my name. I feel there is a real support network of students and lecturers to help me through my degree. I think this is because ACU offers smaller classes, resulting in a more personal experience."

**Alana
Law student**

Nursing, midwifery and paramedicine

**Caring for others
gives more than it takes.**

Your career in nursing, midwifery or paramedicine means a career helping others. You will have the knowledge, skills and attitude to improve people's wellbeing. And be there to provide vital care when they need it most.

CLINICAL NURSING PROGRAMS

This suite of postgraduate programs in clinical nursing is designed to expand your knowledge and skills in clinical nursing while ensuring relevance to clinical practice.

The Master of Clinical Nursing brings the clinical expert and clinical leadership components together. You can either complete a project and two elective subjects, or complete a research dissertation. Both streams develop your knowledge in research and application of specialist clinical skills and knowledge as well as clinical leadership.

The Graduate Diploma in Clinical Nursing builds on your specialist knowledge and introduces clinical leadership. Your knowledge is further expanded in areas of quality and safety, ethical practice, research and leadership in health care. You can pursue either a project or research stream.

In the Graduate Certificate in Clinical Nursing you can choose one clinical specialisation which prepares you to be a clinical specialist. The course focuses on knowledge of specialist pathophysiology, pathology, anatomy and biology, and specialist clinical skills.

2020 tuition fees: Graduate certificate: Average first year fee (PT): \$9,744 fee-paying (indicative only). Graduate diploma/master: Average first year fee (FT): \$19,252 fee-paying (indicative only).

Entry requirements for 2021: To apply for this course, you must have completed a Bachelor of Nursing or equivalent and hold current registration with the Australian Health Practitioner Regulation Agency. You must also be employed in a substantive position in your chosen specialisation while studying the four clinical nursing units, unless approved otherwise by the course coordinator.

Practical experience: You must have access to a setting in your chosen specialty for the entire duration of the Graduate Certificate in Clinical Nursing. Please note this is not a placement organised by ACU.

Career paths: Registered nurses; medical nurses; surgical nurses; paediatric nurses; aged care nurses; community nurses; developmental disability nurses; maternal and infant nurse.

You will specialise in one of the following areas:

Anaesthetics
Cardiac care
Cardiothoracics
Cardiothoracics and heart/lung transplant nursing
Child and adolescent health
Emergency
Gerontological nursing
Intensive care
Interventional cardiology

Medical
Neonatal care
Neuroscience
Oncology
Orthopaedics
Palliative care
Perioperative
Plastics/orthopaedics
Plastics reconstruction
Renal
Spinal care
Surgical

** These units can be taken fully online for students not employed in one of ACU's partner health facilities. You must be working in your chosen specialty or able to negotiate supernumerary clinical practice in your chosen specialty.*

Master of Clinical Nursing

📍 Online, or two clinical units of study at a student's place of employment and two units online (during the graduate certificate)
🕒 1.5 yrs FT (or equivalent PT)

Graduate Diploma in Clinical Nursing

📍 Online, or two clinical units of study at a student's place of employment and two units online (during the graduate certificate)
🕒 1 yr FT (or equivalent PT)

Graduate Certificate in Clinical Nursing

📍 Online, or two clinical units of study at a student's place of employment and two units online 🕒 1 yr PT



“I enjoyed the small, focussed study groups. All my lecturers remembered my name and I felt very much a part of ACU's university community.”

**Morgan
Nursing student**

MENTAL HEALTH NURSING PROGRAMS

Our suite of mental health nursing programs for registered nurses develops graduates with knowledge and skills at a specialist and advanced level. The mental health nursing programs offer:

- opportunities for nurses who are already working in a mental health service, but have no formal postgraduate mental health qualification
- a shift in focus from acute inpatient treatment to recovery-orientated and trauma-informed care philosophy and content
- a specified unit in cognitive behavioural therapy
- professional development opportunities to keep pace with change to mental health legislation, policy and service delivery
- articulation between the graduate certificate, graduate diploma and master's programs
- opportunities to build the required knowledge, skills, and competencies for the workforce
- preparation to respond to the needs of consumers and carers.

2020 tuition fees: Graduate certificate: Average first year fee (PT): \$9,744 fee-paying (indicative only). Graduate diploma/master: Average first year fee (FT): \$19,252 fee-paying (indicative only).

Entry requirements for 2021: To apply for this course you must:

- have completed a Bachelor of Nursing or higher, or have completed the Graduate Diploma in Mental Health Nursing or Graduate Certificate in Mental Health Nursing or equivalent; and
- provide written confirmation from your employer that you are employed in a mental health service.

Accreditation: Our Graduate Diploma in Mental Health Nursing and our Master of Mental Health Nursing are accredited under the Australian College of Mental Health Nurses (ACMHN) National Framework for Postgraduate Mental Health Nursing Education.

Career paths: Clinician; case manager/worker; team leader; service manager; triage manager; psychiatric consultant; liaison nurse.

ACU also offers postgraduate mental health programs for allied health professionals, see page 17 for details.

Registered nurses who successfully complete the Graduate Diploma of Mental Health Nursing or Master of Mental Health Nursing will meet the qualification criteria of the Australian College of Mental Health Nurses Credential for Practice Program.

Master of Mental Health Nursing

📍 Online 🕒 1.5 yrs FT (or equivalent PT)

Graduate Diploma in Mental Health Nursing

📍 Online 🕒 1 yr FT (or equivalent PT)

Graduate Certificate in Mental Health Nursing

📍 Online 🕒 1 yr PT

Bachelor of Midwifery (Graduate Entry)

 Brisbane*, Melbourne**  2 yrs FT (or equivalent PT)

Midwifery goes beyond the birth of babies. Learn how to manage normal pregnancy and childbirth, and provide effective postnatal maternal and newborn care in any maternity setting. As a graduate you can pursue a range of careers, including midwife, consultant midwife, clinical specialist, antenatal educator, or researcher. This two-year graduate entry program is designed to allow registered nurses and bachelor-qualified paramedics to become registered midwives.

2020 tuition fees: Average first year fee (FT): \$6,680
Commonwealth supported place (indicative only).

Entry requirements for 2021: To apply for this course you must have completed:

- a Bachelor of Nursing with a grade point average (GPA) of at least 4.0 and be a registered nurse with the Australian Health Practitioner Regulation Agency (AHPRA), and have a minimum of one-year post-registration clinical practice; or
- a Bachelor of Paramedicine with a GPA of at least 4.0 and be a registered paramedic with a minimum of one-year field experience.

Accreditation: This course is accredited by the Australian Nursing and Midwifery Accreditation Council (ANMAC).

Practical experience: You will undertake clinical placements at maternity hospitals and community facilities across Australia. The first clinical placement begins in the first year of the program. Our clinical partners are very important to us and range from small maternity units to large tertiary hospitals. Our partners include the Mater Health Service, St Vincent's Private Hospital and Redcliffe Hospital. There are many more partners, including rural health services where students have an opportunity to complete placements.

Career paths: Consultant midwives; clinical specialists; antenatal educators; researchers; independent midwifery practitioners; registered midwives within maternity settings; neonatal care in special-care nursery.

* Away From Base mode is also offered in Brisbane for Aboriginal and Torres Strait Islander students only.

**Subject to confirmation. Please check the website for updates

Bachelor of Paramedicine (Professional Entry)

 Online  2 yrs PT

The Bachelor of Paramedicine (Professional Entry) provides an opportunity for paramedics with a non-degree qualification to obtain a Bachelor of Paramedicine.

2020 tuition fees: Average first year fee (PT): \$4,050
Commonwealth supported place (indicative only).

Entry requirements for 2021: To apply for this course you must have completed a professional qualification in paramedicine, be employed as a paramedic, and registered as a paramedic with the Australian Health Practitioner Regulation Agency (AHPRA).

Accreditation: This course is accredited by the Australian Nursing and Midwifery Accreditation Council (ANMAC).

Career paths: Paramedic; team leader; first aid instructor; paramedic instructor; clinical support officer; field technical specialist; advanced life support paramedic; mobile intensive care paramedic; ambulance community officer.

Note: This program was suspended for 2020 applications and may not be offered in 2021. Please check our website for updated information.



ACU Ballarat

Professional education

Grow your expertise to master your field.

Explore your interests, enhance your skills, and gain the qualifications to pursue new opportunities and specialisations as an educator.

Master of Educational Leadership

📍 Online, Melbourne 🕒 1.5 – 2 yrs FT (or equivalent PT)

The education sector requires leaders who are knowledgeable in educational leadership, management and administration. The Master of Educational Leadership is a research driven, practical program designed to support current and aspiring educational leaders who wish to enhance their capacity within the context of their professional setting and meet Australian Professional Standards for Principals (APSP). This program explores new concepts and approaches to teaching and learning that highlight the partnership of teachers and administrators in building a culture of leadership in schools.

You can select appropriate units to meet your needs. Graduates have been successful in gaining promotion and/or admission to doctoral study.

This course has the following specialisations:

- Catholic educational leadership
- Leading learning
- Indigenous leadership
- Executive leadership

It can be completed with or without a named specialisation.

Please note that this program will not lead to a teaching qualification.

2020 tuition fees: Average first year fee (FT): \$19,800 fee-paying (indicative only).

Entry requirements for 2021: To apply for this course you must have completed a bachelor degree.

Career paths: The Master of Educational Leadership is for teachers and administrators who want to enhance their professional practice and become leaders in their school community or organisation. It is the next step towards becoming an educational leader.

Note: This course is under review in 2020 and units may be subject to change

On-campus units may be offered during regular semester or school holiday periods.

Participants with a teaching qualification complete the 120 credit point course with or without a named specialisation. Participants without a teaching qualification complete the 160 credit point course from the Schedule of Unit Offerings outlined in the course handbook on the ACU website.

Graduate Certificate in Educational Leadership

📍 Online, national* 🕒 6 mths FT (or equivalent PT)

The Graduate Certificate in Educational Leadership is for educators including teachers, middle leaders, principals, and administrators who want to become creative and innovative leaders with influence in education. Participants explore theories of educational leadership, management and administration, and learn to apply them appropriately to their own contexts including Catholic and faith-based educational organisations.

2020 tuition fees: Average first year fee: \$11,000 fee-paying (indicative only).

Entry requirements: You must comply with the ACU Admission to Coursework Programs Policy. To be eligible for admission to this course, you must have completed a bachelor degree.

Career paths: This course enables educators including teachers, middle leaders, principals, and administrators to become creative, and innovative leaders with influence in education. You'll be able to undertake various leadership positions in educational settings as you develop and enhance your knowledge in this field.

Note: This course is under review in 2020 and units may be subject to change.

**Selected units are offered on ACU campuses or off-site by special arrangement*

Master of Education

📍 National, online 🕒 1.5 – 2 yrs FT (or equivalent PT)

This advanced education course will enable you to enhance your professional knowledge in pedagogical practices, as well as demonstrate an understanding of recent research. You will analyse the challenges and changing demands of education in the context of social justice, equity and ethics, preparing you to transform and improve practice as a leader in education.

Specialist areas leading to a named specialisation:

- allied school psychology (cohorts only)
- autism spectrum studies
- career development
- inclusive practice
- integrated STEM
- literacy intervention (cohorts only)
- leading learning
- mathematics
- safeguarding children and young people
- student wellbeing
- Teaching English to Speakers of Other Languages (TESOL).

Other curriculum areas available but not leading to a named specialisation include:

- arts education
- contemporary learning
- gifted education
- language and literacy education
- mathematics education.

Please note that this course will not lead to a teaching qualification.

2020 tuition fees: Average first year fee (FT): \$17,600 fee-paying (indicative only).

Entry requirements for 2021: To apply for this course you must have completed a bachelor degree.

Students who do not meet admission requirements may be eligible for special entry based on an application for Recognition of Prior Learning (RPL).

Practical experience: In order to attain a named specialisation in TESOL, students will need to successfully complete a supervised practicum experience (six hours).

Career paths: The Master of Education enhances your career advancement opportunities as a teaching professional or leader, education administrator, researcher or policy maker.

** Selected units are offered on ACU campuses or off-site by special arrangement.*

Note: 'Cohorts only' refers to a specialisation that is not offered to the general public. Instead, organisations will engage ACU to deliver these specialisations to a set group of students (typically their employees).

Visit the website for in depth and up-to-date information on specialisations.

Participants with a teaching qualification complete the 120 credit point course with or without a named specialisation. Participants without a teaching qualification complete the 160 credit point course from the Schedule of Unit Offerings outlined in the course handbook on the ACU website.



ACU North Sydney

Graduate Certificate in Education

📍 Online, national* ⌚ 6 mths FT (or equivalent PT)

Advance your career and become a specialist in your discipline area. The Graduate Certificate in Education will enable you to deepen your knowledge and expertise in a specialisation area and empower you to extend your understanding of educational disciplines.

The course is open to teachers and other professionals engaged in lead educational roles, such as education administrators, researchers, policy makers, career counsellors, psychologists, members of the defence forces, youth ministers and family/parish educators.

You are able to complete the Graduate Certificate in Education with or without a named specialisation. Specialist areas leading to a named specialisation include:

- career development
- inclusive practice
- integrated STEM
- leading learning
- leading the new evangelisation
- literacy intervention (cohorts only)
- mathematics
- safeguarding children and young people
- student wellbeing
- Teaching English to Speakers of Other Languages (TESOL).

Named specialisations are only available in part-time mode and the duration is one year.

The Graduate Certificate in Education is not an initial teaching qualification.

2020 tuition fees: Average first year fee (PT): \$8,800 fee-paying (indicative only).

Entry requirements for 2021: To be eligible for admission to this course, you must have completed a bachelor degree. An applicant must also comply with the Admission to Coursework Programs Policy.

Practical experience: To attain a named specialisation in TESOL, students will need to successfully complete a supervised practicum experience (six hours).

Career paths: Career practitioner; school leader; policy maker; parish leader; education manager; education/curriculum designer; career counsellor, childcare manager; curriculum developer; education policy officer; education researcher; administrator; learning support teacher; specialist teacher; autism spectrum specialist teacher; behaviour specialist consultant; gifted learning teacher; special education teacher; lead integrated maths and science teacher; curriculum development specialist; STEM technology specialist; lead/head teacher; TESOL teacher.

**Selected units are offered on ACU campuses or off-site by special arrangement*

Note: 'Cohorts only' refers to a specialisation that is not offered to the general public. Instead, organisations will engage ACU to deliver these specialisations to a set group of students (typically their employees).

On-campus units may be offered during regular semester or school holiday periods.



ACU Canberra

Psychology



**Making sense of the world
makes a world of sense.**

As a psychologist, you will empower others to improve their lives. And gain the skills to make a real difference to individuals and the community.

Master of Psychology (Clinical)

Melbourne, Strathfield 2 yrs FT (or equivalent PT)

Master of Psychology (Educational and Developmental)

Melbourne 2 yrs FT (or equivalent PT)

Our Master of Psychology (Clinical) and Master of Psychology (Educational and Developmental) programs provide Australian Psychology Accreditation Council (APAC) approved fifth- and sixth-year training in psychology. The programs equip graduates with ethical values, advanced knowledge, and professional skills in psychology, integrated by the scientist-practitioner model.

2020 tuition fees: Average first year fee (FT): \$6,680 Commonwealth supported place (indicative only).

Entry requirements for 2021: To apply for the Master of Psychology (Clinical) or the Master of Psychology (Educational and Developmental), you must have:

- completed within the last 10 years a bachelor degree with honours in an accredited psychology course with a minimum of Second Class Division A (Hons 2A), or
- completed within the last 10 years a bachelor degree with accredited four year major study in psychology (Hons 2A or equivalent), or
- completed within the last 10 years a bachelor degree with accredited three year major study in psychology and satisfactory completion of an additional year of accredited study in psychology, or equivalent, with an overall mark equivalent to Second Class Division A (Hons 2A), or
- qualifications and experience assessed as equivalent by the selection committee, and
- demonstrated suitability to undertake the course as evidenced by:
 - satisfactory academic referee report, and
 - satisfactory professional referee report, and
 - satisfactory interview with the selection committee (for short-listed candidates), and
 - eligibility for registration with the Psychology Board of Australia as a provisional psychologist.

Applications for these programs close early – usually around the end of October. Check the website for the most current information.

Accreditation: The Master of Psychology (Clinical) and the Master of Psychology (Educational and Developmental) are accredited by the Australian Psychology Accreditation Council (APAC).

Practical experience and placement: You must complete 1,000 hours of practicum placement in clinical settings with at least 400 hours of face-to-face client contact.

During the course, you'll complete three practicum placements. The first practicum usually occurs in the on-campus training clinic. During this placement you'll gain experience in assessment, diagnosis and therapy under close individual and group supervision conducted by experienced psychologists. You must be supervised by a psychologist who is an approved supervisor with the Psychology Board of Australia. During the second year

of the course, most students complete two six-month external placements, again under supervision of either a fully endorsed clinical psychologist, or a fully endorsed educational and developmental psychologist, depending on which course you are undertaking. For those undertaking the Master of Psychology (Clinical) practicum options include placements in health care, community mental health teams, non-governmental and private practice settings. For those undertaking the Master of Psychology (Educational and Developmental) practicum options include placements in the Catholic Education Office, Department of Education, schools, early intervention services, disability services, and in non-governmental and private practice settings.

Career paths: Graduates of the Master of Psychology (Clinical) will be prepared for work as practitioner psychologists and skilled researchers in a range of institutions and agencies, providing psychological and mental health services. Graduates of the Master of Psychology (Educational and Developmental) will be prepared for work in educational, family, and community settings.

Students may have the opportunity to study a unit in intensive mode at our Rome Campus.

Psychology career progression map: pathways to registration

UNDERGRADUATE		
APAC-accredited bachelor degree in psychology		
FOURTH-YEAR PROGRAM		
Honours	Graduate Diploma in Psychology	
POSTGRADUATE		
Master's degree (2 years)	Master of Professional Psychology (1 year)*	Master of Psychology/ Doctor of Philosophy (4 years)
CAREER		
Registered psychologist**		
REGISTRAR TRAINING PROGRAM***		
Registered psychologist with specialist endorsement***		

* This is a one-year coursework program. It must be followed by an additional sixth year of supervised psychology work recognised by the Psychology Board of Australia before the candidate can apply for registration as a general psychologist. ** Registration as a psychologist is currently achieved through the Psychology Board of Australia. *** Only applicable for those who have completed a two-year master's degree (ie clinical or educational and developmental). The registrar program is approved by the Psychology Board of Australia.

Note: These pathways are subject to changes in national registration.

Master of Psychology (Clinical)/Doctor of Philosophy

Melbourne, Strathfield 4 yrs FT (or equivalent PT)

Master of Psychology (Educational and Developmental)/Doctor of Philosophy

Melbourne 4 yrs FT (or equivalent PT)

The Master of Psychology/Doctor of Philosophy combines professional training within clinical psychology or educational and developmental psychology with a research Doctor of Philosophy (PhD). You will gain experience in the delivery of psychological services through practicums, study subjects such as psychological assessment, professional practice in psychology, and therapeutic skills, and complete a doctoral thesis concurrently. In the clinical psychology stream, you will specialise in adult and child clinical psychology, clinical health psychology and psychopharmacology as well as advanced psychotherapeutic interventions. In the educational and developmental stream, you will specialise in learning difficulties, applied educational psychology and applied developmental psychology

Entry requirements for 2021: Eligible students who are already enrolled in one of the Master of Psychology degrees may apply to also undertake a PhD after completion of their first year. To be eligible, you must have been admitted to the master's degree with a minimum of Second Class Honours – Division A (H1A) or equivalent, and must have completed the first year of your master's course with a distinction average across all subjects.

While the master's and PhD degrees are partly undertaken concurrently, they are administered separately. If you are interested, you should first contact your psychology course coordinator to explore potential research areas, identify a potential PhD supervisor and write a brief research proposal. Following this, you may apply to Candidature Services for admission to the PhD.

Accreditation: The Master of Psychology (Educational and Developmental)/Doctor of Philosophy and the Master of Psychology (Clinical)/Doctor of Philosophy are accredited by the Australian Psychology Accreditation Council (APAC).

Practical experience: You will complete 1,000 hours of practicum placement in a clinical setting with at least 400 hours of face-to-face client contact.

During the course, you'll complete three practicum placements. The first practicum usually occurs in the on-campus training clinic. During this placement you'll gain experience in assessment, diagnosis and therapy under close individual and group supervision conducted by experienced psychologists. You must be supervised by a psychologist who is an approved supervisor with the Psychology Board of Australia. During the second year of the course, most students complete two six-month external placements, again under supervision by either a fully endorsed clinical psychologist, or a fully endorsed educational and developmental psychologist, depending on which course the student is undertaking. For those undertaking the Master of Psychology (Clinical), practicum options include placements in health care, community mental health teams, and non-governmental and private practice settings. For those undertaking the Master of Psychology (Educational and Developmental), practicum options include placements in the Catholic Education Office, Department of Education, schools, early intervention services, disability services, and in non-governmental and private practice settings.

Career paths: Graduates of the Master of Psychology (Clinical) will be prepared for work as practitioner psychologists and skilled researchers in a range of institutions and agencies, providing psychological and mental health services. Graduates of the Master of Psychology (Educational and Developmental) will be prepared for work in educational, family, and community settings. In addition, those graduating with a PhD could work as an academic.

ACU funds higher degree research students for their term of study. You may also have the opportunity to study a unit in intensive mode at ACU's Rome Campus.

Master of Professional Psychology

Melbourne 1 yr FT (or equivalent PT)

The Master of Professional Psychology offers an alternative to registering as a provisional psychologist through a supervised practice (4+2) pathway or a specialised Master of Psychology degree. Instead, this program is offered under the 5+1 model of psychology training. Open to graduates of an accredited fourth year psychology program, this course is designed to provide psychology graduates with an additional year of full-time education in the professional practice of psychology. This year is sufficient to prepare graduates for a final year of supervised practice prior to general registration as a psychologist.

2020 tuition fees: Average first year fee (FT): \$22,664 fee-paying (indicative only).

Entry requirements for 2021: To apply for this course, you must have:

- completed within the last 10 years a bachelor degree with honours in an accredited psychology course with a minimum of Second Class Division B (Hons 2B); or
- completed within the last 10 years a bachelor degree with accredited fourth-year equivalent major study in psychology with performance deemed of the same level as Second Class Division B (Hons 2B); and
- demonstrate suitability to undertake the course as evidenced by:

- satisfactory academic referee report; and
- satisfactory professional referee report; and
- satisfactory interview with the selection committee (for short-listed candidates); and
- eligibility for provisional registration as a psychologist with the Psychology Board of Australia.

Applications for this program close early – usually in November. Check the website for the most up-to-date information.

Accreditation: This program is accredited by the Australian Psychology Accreditation Council (APAC).

Professional experience: You will complete a minimum of 300 hours practical experience in addition to meeting with a registered psychologist for supervision.

Career paths: This program allows you to become registered as a probationary psychologist whilst undertaking the course. Upon graduation, you will be prepared for general registration as a psychologist once you have completed one year of supervised practice.

This program offers you an alternative 5+1 model to register as a provisional psychologist through this supervised practice pathway.

You may have the opportunity to study a unit in intensive mode at ACU's Rome Campus.

Bachelor of Psychological Science (Honours)

Melbourne, Strathfield 1 yr FT (or equivalent PT)

Learn more about neuropsychology and personality assessment tools, as well as evidence-based approaches to psychological intervention, and delve into professional issues and ethics. The course also offers advanced training in conducting research on human behaviour. This includes all steps of the research process, from formulating research questions and hypotheses to data collection, analysis, and detailed reporting of research findings.

2020 tuition fees: Average first year fee (FT): \$6,680 Commonwealth supported place (indicative only).

Entry requirements for 2021: To apply for this course, you must have completed a bachelor degree within the past five years, including:

- an accredited three-year sequence in psychology; and
- a grade point average (GPA) of at least 5.5 on the ACU seven point scale; and

- distinction level or above in at least four of the second- or third-year psychology units.

Applicants meeting these minimum requirements are ranked on their results for second- and third-year psychology units. Places in the fourth-year programs are then offered on a competitive basis, based on the quality of the applicants.

Applications for this program close early – usually in October. Check the website for the most up-to-date information.

Accreditation/professional recognition: This course is accredited by the Australian Psychology Accreditation Council (APAC).

Career paths: After graduating, you will be eligible for provisional registration as a psychologist in any Australian state or territory.

Graduate Diploma in Psychology

Melbourne, Strathfield 🕒 1 yr FT (or equivalent PT)

Learn more about neuropsychology and personality assessment tools, as well as evidence-based approaches to psychological intervention, and delve into professional issues and ethics. The course also offers advanced training in conducting research on human behaviour. This includes all steps of the research process, from formulating research questions and hypotheses to data collection, analysis, and detailed reporting of research findings.

2020 tuition fees: Average first year fee (FT): \$22,750 fee-paying (indicative only).

Entry requirements for 2021: To apply for this course, you must have completed a bachelor degree within the past five years, including:

- an accredited three-year sequence in psychology; and
- a grade point average (GPA) of at least 5.0 on the ACU seven point scale; and

- credit level or above in at least four of the second- or third year psychology units.

Applicants meeting these minimum requirements are ranked on their results for second- and third-year psychology units. Places in the fourth-year programs are then offered on a competitive basis, based on the quality of the applicants.

Applications for this program close early. Check the website for the most up-to-date information.

Accreditation/professional recognition: This course is accredited by the Australian Psychology Accreditation Council (APAC).

Career paths: After graduation, you will be eligible for provisional registration as a psychologist and associate membership with the Australian Psychological Society.



ACU Melbourne

Public health and administration

Shape the future of health care to keep it in shape.

A career in public health means improving the wellbeing of populations. You'll help to prevent disease, prolong life, and promote health in individuals and communities around the world.

HEALTH ADMINISTRATION PROGRAMS

This suite of postgraduate programs in health administration is designed to expand your knowledge and skills in administrative and management foundations, while ensuring relevance to contemporary health care provision.

The graduate certificate gives you the skills to examine organisational culture by exploring concepts relating to change management and outcomes, and leadership strategies and skills. The graduate diploma gives you the opportunity to build on your administrative or management foundations by evaluating current approaches to policy development and implementation in health care delivery. In the diploma and master's programs, you have the option to pursue a project stream or a research stream.

In the master's program, the project stream consists of project work (20 credit points) and two electives. The research stream consists of a research dissertation (40 credit points).

2020 tuition fees: **Graduate certificate:** Average first year fee (PT): \$9,744 fee-paying (indicative only). **Graduate diploma/master:** Average first year fee (FT): \$19,252 fee-paying (indicative only).

Entry requirements for 2021: To apply for this course you must have completed a bachelor degree in a health discipline or equivalent.

Career paths: These courses lead to a range of career pathways, including health leadership and/or management, research with local, national or international health-related organisations (such as the World Health Organisation), health practitioner regulation, health management consultancy, and/or academia. The breadth of course content provides an excellent foundation for potential leaders in a wide range of health-related environments.

Master of Health Administration

📍 Online, North Sydney 🕒 1.5 yrs FT (or equivalent PT)

Graduate Diploma in Health Administration

📍 Online, North Sydney 🕒 1 yr FT (or equivalent PT)

Graduate Certificate in Health Administration

📍 Online through Open Universities Australia, North Sydney 🕒 1 yr PT



Master of Leadership and Management in Health Care

📍 Online through Open Universities Australia, North Sydney 🕒 2 yrs FT (or equivalent PT)

This course is designed to prepare ethical and effective health care leaders and managers who will be able to lead health service delivery into the future. The course has a strong focus on strategic organisational management, leading change in health service delivery, clinical redesign and in being a facilitative leader who is able to engage staff on developing innovative quality improvements.

This course will appeal to those who want to develop strong leadership and effective management skills that can be applied across a range of health care environments. The course is offered at master's level only, with exit options being the Graduate Certificate in Health Administration or the Graduate Diploma in Health Administration.

2020 tuition fees: Average first year fee (FT): \$19,252 fee-paying (indicative only).

Entry requirements for 2021: To apply for this course you must have completed:

- the equivalent of an Australian bachelor degree in a health or human services related discipline; or
- the equivalent of an Australian Graduate Certificate in Health Administration or Graduate Diploma in Health Administration; or
- the equivalent of an Australian bachelor degree in any discipline and relevant work experience in a health or human services role.

Career paths: Health services manager; nurse unit manager; chief executive officer in a health facility; leader or manager in a humanitarian or social welfare organisation; manager of a public or private health-related facility.



“ACU values strongly align with my own, and I was looking for a course where I could evolve both personally and academically. I believe ACU facilitates this with morals and ethics ingrained in the course content, which in-turn challenges students' thoughts and perspectives on contemporary issues.”

Doug
Health administration student

HEALTH PROFESSIONAL EDUCATION PROGRAMS

This suite of postgraduate programs in health professional education gives you the knowledge and skills to plan, implement, and evaluate health professional education programs in health care settings.

The graduate certificate gives you a foundation for facilitating clinical learning. The graduate diploma is an opportunity to further develop knowledge and skills in ethics, leadership and quality, and safety in health professional education in health care. The master's level units connect theory, practice and research. Both the diploma and master's programs give you the opportunity to undertake a project or research stream.

2020 tuition fees: **Graduate certificate:** Average first year fee (PT): \$9,744 fee-paying (indicative only). **Graduate diploma/master:** Average first year fee (FT): \$19,252 fee-paying (indicative only).

Entry requirements for 2021: To be eligible for admission to the Master of Health Professional Education, you must:

- have completed either a bachelor degree in a health discipline or equivalent; or
- have completed either the Graduate Certificate in Health Professional Education or the Graduate Diploma in Health Professional Education; and
- have completed at least one year of clinical or work experience prior to admission.

An applicant must also comply with the Admission to Coursework Programs Policy.

Career paths: Simulation centre management; health care education; academic lecturing; simulation pedagogy research; simulation technician; military and emergency services educator; health professional education outcomes research; work-integrated learning pedagogy research.

Master of Health Professional Education

📍 Online 🕒 1.5 yrs FT (or equivalent PT)

Graduate Diploma in Health Professional Education

📍 Online 🕒 1 yr FT (or equivalent PT)

Graduate Certificate in Health Professional Education

📍 Online through Open Universities Australia 🕒 1 yr PT



Master of Public Health

Melbourne, online* through Open Universities Australia 2 yrs FT (or equivalent PT)

Our suite of postgraduate programs in public health are designed to respond to the evolving role of public health practitioners within the Australian health system and internationally.

These programs have been specifically designed to incorporate both Australian and global public health viewpoints. The programs also include a unique global health and advocacy specialisation option.

Our public health programs will equip you with specialised knowledge, understanding and skills in public health to improve and advance population health and wellbeing. They will prepare you to practice with a community, national or global focus, and with an ethical, social justice perspective. The programs emphasise evidence-based practice, rigorous intellectual enquiry, innovation and thought leadership, as well as development of effective communication and advocacy skills.

Specialisation: Global health and advocacy: Global health is an increasingly important and active area of work for public health practitioners. If you are planning to focus on global health, our Master of Public Health program offers a specialisation in global health and advocacy during your second year. The Master of Public Health (Global Health and Advocacy) specialisation will give you the knowledge, skills and experience to practice effectively in the evolving professional landscape of global health.

This specialisation features a contemporary curriculum designed around the United Nations' sustainable development goals. In this specialisation, you will extend your core public health knowledge and skills through studying global health, sustainable development, food security, humanitarian assistance and the importance of

advocacy in public and global health. By developing advocacy skills, the global health and advocacy specialisation aims to enable graduates to not just implement policies and programs that improve population health, but to actively influence policies and programs and advance population health.

2020 tuition fees: Graduate certificate: Average first year fee (PT): \$9,744 – \$10,141 fee-paying (indicative only).

Graduate diploma/master: Average first year fee (FT): \$19,488 fee-paying (indicative only).

Entry requirements for 2021: This course is under review along with its admission requirements for 2021 entry. Please check our website for updated information.

Students successful in completing either the Graduate Certificate in Public Health, Graduate Certificate in Global Health, or Graduate Diploma in Public Health may elect to progress into the Master of Public Health program.

Professional recognition: Our Master of Public Health program has been designed around the Foundation Competencies for Master of Public Health Graduates in Australia and the requirements of the Australian Faculty of Public Health Medicine (for medical practitioners specialising in public health). Other international competency and practice standards and conceptual frameworks have also informed the Master of Public Health curriculum design.

Career paths: Program manager; program evaluator; health educator; consumer advocate; epidemiologist; project officer; policy analyst; research professional; public health officer; allied health practitioner; registered nursing practitioner.

*Some elective units are not available online.

Note: This course is currently under review. Check the website for the most up-to-date information, including details on entry requirements.

Master of Public Health (Global Health and Advocacy)

Melbourne, online* through Open Universities Australia 2 yrs FT (or equivalent PT)

Graduate Diploma in Public Health

Melbourne, online* through Open Universities Australia 1 yr FT (or equivalent PT)

Graduate Certificate in Public Health

Melbourne, online* through Open Universities Australia 1 yr PT

Graduate Certificate in Global Health

Melbourne, online* through Open Universities Australia 1 yr PT

Sport and exercise science

**Exercise your power
to share the power of exercise.**

Help people achieve peak performance, optimal health and wellbeing. If you're passionate about sport, exercise, and health — this is for you.

Master of Clinical Exercise Physiology

 Brisbane, Melbourne, Strathfield  1.5 yrs FT (or equivalent PT)

This master's degree looks at how exercise is used as a preventative, prescriptive and rehabilitative process for complex and chronic disease, work-related injuries and to promote good health.

Gain knowledge and appropriate skills in screening, assessment, and provision of exercise intervention in multiple applications across the lifespan, including prevention and management of chronic disease, workplace conditioning, and sport injury rehabilitation.

2020 tuition fees: Average first year fee (FT): \$7,390
Commonwealth supported place (indicative only).

Entry requirements for 2021: To apply for this course, you must:

1. have completed a bachelor degree that is accredited by Exercise and Sports Science Australia (ESSA) at Exercise Science level, with one of the following:
 - i) a grade point average (GPA) of at least 4.6 on the ACU 7 point scale; or
 - ii) evidence of substantial relevant industry experience for at least one year post-bachelor graduation; or
 - iii) have completed ACU's Graduate Certificate in Exercise Rehabilitation for Sports Injuries
 OR
2. have met the requirements of ESSA Graduate assessment for postgraduate study, and have completed a bachelor degree or higher in exercise science or related field with one of the following:
 - i) a grade point average (GPA) of at least 4.6 on the ACU 7 point scale; or
 - ii) evidence of substantial relevant industry experience for at least one year post-bachelor graduation; or
 - iii) have completed ACU's Graduate Certificate in Exercise Rehabilitation for Sports Injuries
 AND

3. submit a curriculum vitae outlining relevant industry experience for this course of study
AND

4. submit professional referee/s information relevant to industry experience.

Applications for this program close by 31 December.

Accreditation: Any graduate of our Master of Clinical Exercise Physiology program can apply to ESSA to become an accredited exercise physiologist (AEP). This degree is fully accredited for graduates in the program to 2023.

Entry pathways: ACU's Bachelor of Exercise and Sports Science degree is NUCAP-accredited (National University Course Accreditation Program) for exercise science to 2023. It is therefore an entry pathway to the Master of Clinical Exercise Physiology.

Degrees at other Australian universities that are NUCAP accredited at the exercise science level also act as entry pathways.

Students who attain exercise scientist membership or graduate entry assessment through ESSA can apply for entry to the Master of Clinical Exercise Physiology.

Entry via successful completion of other allied health programs will be considered on a case-by-case basis.

Practical experience: You are required to complete 360 hours of professional clinical experience in a range of AEP targeted pathologies.

Career paths: Chronic disease management; musculoskeletal rehabilitation; return-to-work conditioning; primary prevention/wellness; health and fitness; strength and conditioning; workplace wellness; community health.

Note: This course is currently under review. Please check the website for the most up-to-date information.



ACU Strathfield

Graduate Certificate in Exercise Rehabilitation for Sports Injuries

📍 Online with a three-day on-campus intensive component in Melbourne or overseas in the USA in June. ⌚ 1 yr PT

The Graduate Certificate in Exercise Rehabilitation for Sports Injuries provides specialist knowledge and skills in biomechanics, metabolic and physiological-psychosocial aspects of the person. This is in order to develop exercise programs for the enhancement and improved performance of individuals who are engaged in sporting or exercise activities. The course integrates specialist knowledge and skills to develop safe and effective exercise prescriptions. This includes interventions for injury prevention in active individuals who may have activity restrictions due to injury or disease limitations or who want to return to sport performance. You can begin this course at the start of Semester 1 or 2.

2020 tuition fees: Average first year fee (PT): \$9,744 fee-paying (indicative only).

Entry requirements for 2021: To apply for this course, you must:

- hold a bachelor degree (or higher), normally in exercise science, sports science, human movement, physiotherapy, athletic training, physical therapy, kinesiology or related discipline.

Career paths: This course will allow you to broaden your clinical skills and offer services to wider range of community members.

The Graduate Certificate in Exercise Rehabilitation for Sports Injuries is one of the first postgraduate specialisation courses offered to Accredited Exercise Physiologists. This course is also a pathway into ACU's Graduate Diploma in High Performance Sport, Master of High Performance Sport, Graduate Diploma in Rehabilitation and Master of Rehabilitation.



“At ACU, I have developed personal and professional relationships with my lecturers whose approach to teaching is that of care as well as excellence. The teaching team have taken the time to learn my name and develop a relationship with me, which I have appreciated. This has allowed me to feel comfortable and provided a great environment for me to learn.”

Shea
Rehabilitation student

HIGH PERFORMANCE SPORT PROGRAMS

The high performance sport suite of programs offers relevant, professional practice-related learning, independent research and project work, and an opportunity for an industry-based internship.

The Master of High Performance Sport can also provide a pathway into further research study, such as a PhD. A series of study units focus on the technological advances for athlete monitoring, advanced principles of strength and conditioning, and the relationships between fatigue, adaptation, performance and injury. The application of this knowledge to the planning and delivery of meaningful interventions for athletes to enhance performance and

reduce the likelihood of injury and illness is essential for a professional working in the high performance sport environment. This includes using appropriate techniques of analysis to accurately interpret competition and training information, with advanced information literacy skills to communicate ideas and outcomes.

Career path: High performance manager; head of athletic department; elite sports team manager; sports science manager; professional coach; rehabilitation coach; athlete wellbeing manager; strength and conditioning coach; performance analyst.

Master of High Performance Sport

Online with an on-campus intensive component in Melbourne in February or overseas in the USA (June) each year  1.5 yrs FT (or equivalent PT)

2020 tuition fees: Average first year fee (FT): \$19,488 fee-paying (indicative only).

Entry requirements for 2021: To apply for this course, you must:

- have completed a bachelor degree (or higher) in exercise science, sports science, human movement or a related discipline and have evidence of substantial relevant industry experience and submit a supporting professional referee's report regarding suitability for this postgraduate program and/or experience in the industry; or
- have completed a bachelor degree normally in exercise science, sports science, human movement or a related discipline, with a grade point average (GPA) of at least 4.8 and submit a supporting professional referee's report regarding suitability for this postgraduate program and/or experience in the industry; or
- have completed ACU's Graduate Diploma in High Performance Sport, Graduate Certificate in High Performance Sport, Graduate Certificate in Performance Analysis, Graduate Certificate in High Performance Sport Leadership, or Graduate Certificate in Exercise Rehabilitation for Sport Injuries.

Applicants having completed a bachelor degree (or higher) in a related allied health discipline may be considered, dependent on specific qualifications and evidence of substantial industry experience.

Applications for this program close early – usually in January. Check the website for the most up-to-date information.

Professional recognition: Upon completion of the degree, students will be able to apply for recognition of prior learning for Australian Strength and Conditioning Association Level 2, and ESSA Sport Scientist Level 1.

Entry pathways: Graduate Diploma in High Performance Sport, Graduate Certificate in High Performance Sport, Graduate Certificate in Performance Analysis, Graduate Certificate in High Performance Sport Leadership, or Graduate Certificate in Exercise Rehabilitation for Sport Injuries.

Practical experience: You can choose multiple electives, such as industry experience and international experience in high performance sport.

Graduate Diploma in High Performance Sport

Online with an on-campus intensive component in Melbourne in February or overseas in the USA (June) each year  1 yr FT (or equivalent PT)

Graduate Certificate in High Performance Sport

📍 Online through Open Universities Australia 🕒 6 mths FT (or equivalent PT)

2020 tuition fees: Average first year fee (PT): \$9,744 fee-paying (indicative only).

Entry requirements for 2021: To apply for this course, you must:

- have completed a bachelor degree (or higher) in exercise science, sports science, human movement or a related discipline; or
- have completed a bachelor degree (or higher) in a different discipline and have evidence of substantial relevant industry experience; or

- submit a written proposal alongside a formal application, demonstrating suitability for study and evidence of relevant industry experience.

Applications for this program close early – usually in late January. Check the website for the most up-to-date information.

You can enter this program on the basis of relevant professional experience.

Graduate Certificate in High Performance Sport Leadership

📍 Online through Open Universities Australia* 🕒 1 yr PT only

The high performance sport industry is increasingly focused on developing employees and athletes with strong leadership skills and training in ethics. Proposed regulatory changes within the industry may make these skills a necessity. The Graduate Certificate in High Performance Sport Leadership has been designed specifically to address these industry demands.

2020 tuition fees: Average first year fee (PT): \$9,744 fee-paying (indicative only).

Entry requirements for 2021: To apply for this course, you must:

- have completed a relevant bachelor degree (or higher); or
- have completed a bachelor degree in a different discipline and have evidence of substantial relevant industry experience; or
- submit a proposal alongside your formal application, demonstrating evidence of substantial relevant industry experience over a sustained period.

Career paths: Elite sport board member; elite sport executive committee member; head of athletic department; high performance manager; team manager; sports scientist; professional coach; athlete wellbeing manager; strength and conditioning coach.

**Depending on elective choice, you may be required to attend an on-campus intensive at the Melbourne Campus.*

Note: This course is currently under review. Please check the website for the most up-to-date information.

You can enter this program on the basis of relevant professional experience. This course is also a pathway into ACU's Graduate Diploma of High Performance Sport, Master of High Performance Sport, Graduate Diploma of Rehabilitation, and Master of Rehabilitation.



ACU Strathfield

Graduate Certificate in Performance Analysis

📍 Online 🕒 1 yr PT or 18 months PT for midyear enrolment

Performance analysis is a rapidly growing area of specialisation in the high performance sport industry, both nationally and internationally. The Graduate Certificate in Performance Analysis provides specialist knowledge and skills in performance analysis, by providing theoretical and applied foundations for practice in this industry. You will develop advanced knowledge and skills in data handling and analysis, and be exposed to technologies used in high performance sport settings. The learning outcomes encourage critical thinking, solving of complex problems, and communication of complex knowledge and ideas to other professionals working in the high performance sport industry.

2020 tuition fees: Average first year fee (PT): \$9,744 fee-paying (indicative only).

Entry requirements for 2021: To apply for this course, you must:

- have completed a bachelor degree (or higher) in exercise science, sports science, human movement or a related discipline; or

- have completed a bachelor degree (or higher) in a different discipline and have evidence of relevant industry experience; or
- submit a proposal alongside your formal application, demonstrating evidence of substantial relevant industry experience.

Career paths: Performance analyst; sports scientist; strength and conditioning coach; professional coach; high performance manager; sports science manager; fitness advisor; rehabilitation coach.

Note: This course is currently under review. Please check the website for the most up-to-date information.

You can enter this program on the basis of relevant professional experience. This course is also a pathway into ACU's Graduate Diploma in High Performance Sport, Master of High Performance Sport, Graduate Diploma in Rehabilitation (non-discipline stream), and Master of Rehabilitation (non-discipline stream).



ACU Brisbane

Teaching



**Teach the mind.
Inspire the soul.**

As an educator, you will make a huge difference to the lives of young people. You'll shape minds, inspire ambition and impact the future.

Master of Teaching (Early Childhood and Primary)

📍 Online 🕒 2 yrs FT (or equivalent PT)

Become an accomplished teacher who advocates for the rights and responsibilities of all children.

The Master of Teaching (Early Childhood and Primary) is a graduate entry, preservice teacher education course for those who want to qualify as both an early childhood and primary school teacher. This course cultivates graduates who are passionate about, and committed to, the generation and dissemination of knowledge, skills and attitudes that facilitate high-quality learning in a child's early years. Delivered fully online, this course is made up of a series of online units and block day placements in early childhood and primary school settings.

2020 tuition fees: Average first year fee (FT): \$6,680 Commonwealth supported place (indicative only).

Entry requirements for 2021: To be eligible for admission to the course, an applicant must:

1. have successfully completed a bachelor degree or equivalent qualification, with:
 - a) subject content studies equivalent to one year of full-time study in one or more learning areas of the primary school curriculum
 - b) subject content studies equivalent to one quarter of a year in a selected subject specialisation of English or mathematics

2. demonstrate suitability for teaching as evidenced by completion of an assessment available in the relevant state at the time of application.

Accreditation/professional recognition: This program is listed on the Australian Institute for Teaching and School Leadership (AITSL) accredited programs list and meets the teacher education component of the qualification requirement for registration (accreditation) as a primary school teacher in all states and territories.

Practical experience: 80 days.

Career paths: Early years teacher; kindergarten teacher; academic religious educator; education researcher; play specialist; learning designer; education researcher; adult educator; curriculum development specialist; education consultant; primary school teacher; and government education policy maker.

Note: This course is under review in 2020 and units may be subject to change.

ACU will find appropriate placements to suit the needs of your course.

Master of Teaching (Early Childhood and Primary)/Graduate Certificate in Religious Education

📍 Online 🕒 2 yrs FT

Students wishing to study religious education as a teaching area should apply to enrol in the Master of Teaching (Early Childhood and Primary)/Graduate Certificate in Religious Education.

This course allows you to concurrently complete the Graduate Certificate in Religious Education to gain accreditation to teach religious education in Catholic or Lutheran schools.

See our website for further information about the Master of Teaching (Early Childhood and Primary)/Graduate Certificate in Religious Education.

If you wish to teach in a Catholic primary school you will be required to have a Graduate Certificate in Religious Education qualification or equivalent (this may vary by

diocese) and further study will be required if you choose not to do the study concurrently.

2020 tuition fees: Average first year fee (FT): \$8,350 Commonwealth supported place (indicative only).

Career paths: Graduates of this course are qualified to become primary school teachers who want to teach religious education.

Note: This course is under review in 2020 and units may be subject to change.

Most units in the Graduate Certificate in Religious Education are taught intensively in the summer and winter terms between each semester.

Master of Teaching (Primary)

Melbourne, Strathfield 2 yrs FT (or equivalent PT) or 18 mths FT in accelerated mode

Become a primary school teacher who is reflective, independent and a flexible thinker. Learn how to apply your skills to improve learning outcomes for students in primary schools. The Master of Teaching (Primary) is a graduate entry, preservice teacher education course for those who want to become primary school teachers.

This course will enable you to engage with the breadth of curriculum and pedagogical knowledge required by a generalist primary classroom teacher combined with specialist knowledge and understanding of not only literacy and numeracy but other learning areas of the primary school curriculum. Delivered on campus, this course is made up of face-to-face, online and intensive units, and block placements in primary schools, offering flexible learning delivery to meet your needs.

2020 tuition fees: Average first year fee (FT): \$6,680 Commonwealth supported place (indicative only).

Entry requirements for 2021: To be eligible for admission to the course, an applicant must:

- have successfully completed a bachelor degree or equivalent qualification, with subject content studies equivalent to one year full-time study in one or more learning areas of the primary school curriculum

- demonstrate suitability for teaching
- an applicant must also comply with the Admission to Coursework Programs Policy.

Accreditation: Graduates are eligible for registration as a primary school teacher in government, independent, and Catholic schools or other faith-based schools. If you wish to teach in a Catholic primary school you will be required to have a Graduate Certificate in Religious Education qualification or equivalent (this may vary by diocese). You can study this concurrently with your master's degree at ACU.

Practical experience: Minimum 60 days.

Career paths: Primary school teacher; academic; religious educator; education researcher; play education specialist; learning designer; education researcher; adult educator; curriculum development specialist; education consultant; government education policy maker.

Note: This course is under review in 2020 and units may be subject to change.

Become a leader in your area of curriculum specialisation.

Master of Teaching (Primary)/ Graduate Certificate in Religious Education

Melbourne, Strathfield 2.25 yrs FT (or equivalent PT)

Students wishing to teach religious education in Catholic or Lutheran schools should apply to enrol in the Master of Teaching (Primary)/Graduate Certificate in Religious Education. This course allows you to concurrently complete the Graduate Certificate in Religious Education to gain accreditation to teach religious education.

Further study will be required if you choose not to do the study concurrently.

2020 tuition fees: Average first year fee (FT): \$8,350 Commonwealth supported place (indicative only).

Note: This course is under review in 2020 and units may be subject to change.

Most units in the Graduate Certificate in Religious Education are taught intensively in the summer and winter terms between each semester.



ACU Melbourne



“I chose ACU because it gave me the opportunity to study an area I felt passionately about.

I see the need for education to develop young minds and give them options to excel in the real world. My first practical experience was at Murrumba State Secondary College. The experience was incredible, and I really felt like I was giving back to the local community.”

**Marcus
Teaching (secondary) student**

Master of Teaching (Secondary)

📍 Blacktown, Brisbane, Canberra, Melbourne, Strathfield 🕒 2 yrs FT (or equivalent PT) or 18 mths FT in accelerated mode

Become the kind of teacher who is confident, adaptable and able to design and implement engaging and flexible learning experiences to meet the needs of all students in the classroom. This is a graduate entry, preservice teacher education course for those who want to become secondary school teachers. Whether you are looking for a complete career change or are a recent graduate, you can use your undergraduate degree to inform your specialist teaching areas in this secondary school course.

Depending on your undergraduate degree and campus of study, this course will prepare you to teach in two specialist areas. These may include:

- accounting
- biology
- business studies
- chemistry
- design and technology¹
- drama
- earth and environmental sciences
- economics
- English
- geography
- health²
- history
- information and communication technologies
- languages other than english
- legal studies
- mathematics
- media²
- music
- outdoor education²
- physical education
- physics
- psychology²
- politics²
- religious education
- study of religion⁴
- TESOL²
- visual arts.

2020 tuition fees: Average first year fee (FT): \$6,680 Commonwealth supported place (indicative only).

Entry requirements for 2021: An applicant must comply with the ACU Admission to Coursework Programs Policy. To be eligible for admission to the course, an applicant must:

1. have successfully completed a bachelor degree or equivalent qualification, with:

- a major study in one teaching area; and
- a separate minor study in a second teaching area, that may be separate from or related to the major study area;
- be able to select from teaching areas that are available within the course and meet the requirements of applicant's local state/territory registration authority; and
- the combination of teaching areas identified would usually prepare the applicant to teach across all year levels of secondary schooling.

2. demonstrate suitability for teaching.

Accreditation: Graduates are eligible for registration as a secondary school teacher in government, independent, and Catholic schools or other faith-based schools.

Practical experience: Minimum 60 days. Professional experience placements are a core part of the course and involve multiple mentored teaching experiences in schools for periods of up to four weeks at a time.

Career paths: Secondary school teacher; education consultant; learning designer; education policy developer; education researcher; adult education; curriculum leader.

1. NSW only, 2. Vic only, 3. NSW, Vic & ACT only, and 4. NSW, ACT & Qld only.

Note: This course is under review in 2020 and units may be subject to change.

Students can enrol in units to be studied online and this course may be completed in accelerated mode in 18 months at some campuses.

Master of Teaching (Secondary)/ Graduate Certificate in Religious Education

📍 Blacktown, Brisbane, Canberra, Melbourne, Strathfield 🕒 2.25 yrs FT (or equivalent PT) but may be completed in 2 yrs

2020 tuition fees: Average first year fee (FT): \$8,350 Commonwealth supported place (indicative only).

This course is specifically designed for students who wish to teach religious education in secondary schools in addition to other curriculum areas. Students will receive the basic certification, and develop fundamental knowledge, skills and competencies required to teach religious education in any Australian jurisdiction. This course allows you to concurrently complete the Graduate Certificate in Religious Education to gain accreditation to teach religious education in Catholic or Lutheran schools.

Career paths: This course is specifically designed to meet accreditation requirements. It enables graduates to teach religious education in Catholic schools in addition to their other teaching areas.

Note: This course is under review in 2020 and units may be subject to change.

Gain accreditation to teach religious education while concurrently completing your Master of Teaching (Secondary). This course is also a pathway to higher research degrees.

Theology

Seeking answers to life's big questions.

Do you want to explore the purpose of existence and living, and uncover the meaning of faith seeking understanding? Welcome to theology – food for your enquiring mind.

THEOLOGY STUDIES PROGRAMS

Master of Theological Studies

📍 Adelaide, Ballarat, Blacktown, Brisbane, Canberra, Melbourne, Strathfield, online 🕒 2 yrs FT (or equivalent PT)

The Master of Theological Studies is a coursework degree for those seeking to develop mastery of theological knowledge and develop skills in communicating that knowledge.

Graduates of the Master of Theological Studies will:

- demonstrate a critical awareness of sources for and methodological approaches to a range of theological studies
- interpret biblical texts in view of historical, cultural, literary, philosophical, and theological analyses
- use biblical and theological resources to explain the historical origins, development, and interconnections of Christian doctrines
- have the opportunity to study units in philosophy that enrich theological understanding
- undertake a research-based project.

Available specialisations include:

- biblical and early Christian studies
- Christian practice
- Christian thought
- liturgy
- philosophy.

2020 tuition fees: Graduate certificate: Average first year fee (PT): \$8,800 fee-paying (indicative only). Graduate diploma/master: Average first year fee (FT): \$17,600 fee-paying (indicative only).

Entry requirements for 2021: To apply for this course, you must have completed a bachelor degree in any discipline.

Accreditation/professional recognition: Professional recognition may differ between dioceses. Teacher applicants are advised to contact the Catholic or state education office in the area in which they teach to ascertain the status of the course.

Entry pathways: Those who have completed the Bachelor of Theology (Honours), Graduate Certificate in Theological Studies, or Graduate Diploma in Theological Studies will be granted advanced standing into the Master of Theological Studies.

Career paths: Hospital, school or prison chaplain; minister of religion; youth minister; pastoral associate; lay minister; community worker; community advocate; teacher; lecturer; researcher; journalist; writer.

Exit qualifications: Students who have completed the requirements for the Graduate Certificate in Theological Studies or Graduate Diploma in Theological Studies may exit with that award.

Units may be offered over short, intensive periods, online, or by flexible delivery. A range of international study tours are offered to students of this course.

Graduate Certificate in Theological Studies

📍 Adelaide, Ballarat, Blacktown, Brisbane, Canberra, Melbourne, Strathfield, online 🕒 6 mths FT (or equivalent PT)

The Graduate Certificate in Theological Studies gives graduates in other disciplines a basic foundation in Christian theology, and allows theology graduates the opportunity to extend their knowledge in specific areas. You may elect to complete the Graduate Certificate in Theological Studies with a specialisation in:

- ancient languages
- the Biblical world
- liturgy (see the Graduate Certificate in Theological Studies (Liturgy)).

Successful completion of the Graduate Certificate in Theological Studies qualifies you for admission into the Graduate Diploma in Theological Studies, Master of Theological Studies or Master of Professional Studies in Theology.

2020 tuition fees: Average first year fee (PT): \$8,800 fee-paying (indicative only).

Entry requirements for 2021: To apply for this course, you must have completed a bachelor degree in any discipline.

Career paths: Hospital, school, aged care or prison chaplain; minister of religion; youth minister; pastoral associate; lay minister; community worker; community advocate; teacher; lecturer; researcher; journalist; writer.



“I enjoyed the relationships with the teachers. They were passionate about what they were teaching and showed real concern for their students.”

**Linda
Religious education student**

Master of Professional Studies in Theology

📍 Adelaide, Ballarat, Brisbane, Canberra, Melbourne, Strathfield, online 🕒 1.5 yrs FT (or equivalent PT)

Within Catholic organisations, there is an identified need for professionals to understand and promote the identity, mission, and ethos of the Catholic Church. The Master of Professional Studies in Theology has been developed specifically to address this need.

It is ideal for Catholic school teachers and other Catholic school professionals looking to develop and enhance their leadership capacity. The program is also suitable for professionals working in Catholic and other Church organisations, including health care, aged care, education, and social services.

For Catholic school teachers and professionals, this program has been designed to strengthen your capacity to lead, engage, and teach with a re-contextualised Catholic world view. The engagement with the Enhancing Catholic School Identity Project provides a particular highlight.

The Master of Professional Studies in Theology offers a unique perspective on leadership for mission, providing a deeper level of engagement with the discipline of theology.

The program complements and builds upon existing qualifications and professional experience, offering a rich variety of international study tour opportunities, an ability to specialise in particular discipline areas, and a capstone research component.

2020 tuition fees: Average first year fee (FT): \$17,600 fee-paying (indicative only).

Entry requirements for 2021: To apply for this course, you must have:

- completed a bachelor degree, or the Graduate Certificate in Catholic Studies, Graduate Certificate in Theological

Studies, Graduate Certificate in Leadership and Catholic Culture, Graduate Diploma in Theological Studies, Graduate Certificate in Religious Education, or Postgraduate Certificate in Education, or equivalent; and

- a minimum of one year professional experience in the Catholic sector.

Accreditation/professional recognition: Professional recognition may differ between dioceses. Teacher applicants are advised to contact the Catholic or state education office in the area in which they teach to ascertain the status of the course.

Entry pathways: A student who has completed a relevant postgraduate award (see list above) will be granted advanced standing into the Master of Professional Studies in Theology. Graduate or postgraduate certificates provide an 80 credit point pathway (1 year FT or PT equivalent), with the graduate diploma providing a 40 credit point pathway (0.5 FT or PT equivalent).

Exit qualifications: Students who have completed the requirements for the Graduate Certificate in Theological Studies or Graduate Diploma in Theological Studies may exit with that award.

Career paths: Teaching; education; health care; aged care; social services; church organisations and ministries; chaplaincy; community organisations; pastoral work.

Units taught on campus are usually taught over short, intensive periods.

Master of Religious Education

📍 Online 🕒 1.5 yrs FT (or equivalent PT)

This course is designed to meet the needs of those with a special interest in religious education at the school, parish, or diocesan level. The Master of Religious Education aims to provide opportunities for professionals to explore values, attitudes, knowledge and skills in religious education as they pursue advanced study and apply new learning with confidence. You will analyse the challenges and changing demands of religious education in the context of social justice, religious pluralism, and equity and ethics, preparing you for transforming and improving practice.

2020 tuition fees: Graduate certificate: Average first year fee (PT): \$8,800 fee-paying (indicative only). **Graduate diploma/master:** Average first year fee (FT): \$15,400 fee-paying (indicative only).

Entry requirements for 2021: To apply for this course, you must have completed:

- a bachelor degree in education; or
- a bachelor degree in an area other than education and a recognised teaching qualification; or

- a bachelor degree in an area other than education and a Graduate Certificate in Educational Studies or equivalent.

Accreditation/professional recognition: Professional recognition may differ between dioceses. Applicants are advised to contact the Catholic or state education office in the area in which they teach to ascertain the status of the course.

Entry pathways: Those who have completed the Graduate Certificate in Religious Education, or Graduate Diploma in Religious Education will be granted advanced standing into the Master of Religious Education.

Career paths: Graduates in the Master of Religious Education seek to enhance and strengthen their leadership capacity within schools, education offices, parishes or diocesan or other faith base organisations to become leaders in their field. Graduates may progress to higher degree research or doctoral programs.

Recognition of prior learning and credit transfer are available at ACU.

Graduate Certificate in Religious Education

📍 Online, multi-mode ⌚ 6 mths FT (or equivalent PT)

The Graduate Certificate in Religious Education is an initial course of study that introduces you to various religious study fields.

2020 tuition fees: Average first year fee (PT): \$8,800 fee-paying (indicative only).

Entry requirements for 2021: To apply for this course you must have completed a bachelor degree, diploma or equivalent.

Accreditation/professional recognition: The course satisfies accreditation requirements to teach religious education in Catholic and other faith-based primary and secondary schools in most dioceses across Australia.

Career paths: This course provides the necessary specialisation in religious education for entry to the Master of Religious Education and provides certification for those who want to teach religious education within schools, parishes and other educational systems.

Check with your employing diocese to ensure you complete the required combination of units to meet accreditation requirements.

Graduate Certificate in Catholic Studies

📍 Melbourne, online ⌚ 1 yr PT

The Graduate Certificate in Catholic Studies is designed to help you develop an understanding of the theological concepts that are fundamental to the Catholic faith, and the core principles and practices for teaching religious education.

The course was developed in consultation with the Catholic education sector to meet the specific requirements for accreditation to teach religious education in Catholic schools, in accordance with the existing Catholic Education Commission Victoria (CECV) Accreditation Policy.

Accreditation requirements differ locally and we recommend you check requirements with your local diocese.

2020 tuition fees: Average first year fee (PT): \$7,720 fee-paying (indicative only).

Entry requirements for 2021: To apply for this course, you must have completed a bachelor degree, accredited diploma, or equivalent.

Accreditation/professional recognition: Graduates will gain accreditation to teach religious education in Catholic schools in accordance with the existing Catholic Education Commission Victoria (CECV).

Career paths: For graduates wishing to teach religious education in Catholic Schools or church organisations.

This course has been developed in consultation with the Catholic education sector.



ACU Melbourne

Higher degree research and other courses



Doctor of Philosophy (PhD)

📍 Adelaide, Ballarat, Brisbane, Canberra, Melbourne, North Sydney, Strathfield 🕒 3 yrs FT (or equivalent PT)

The Doctor of Philosophy (PhD) is awarded for high-level research and, as such, it is expected that candidates will make a contribution to knowledge in their chosen field. A PhD may be undertaken by two different means:

1. Traditional PhD: a candidate's work is assessed on the basis of a thesis.
2. PhD with publication: a candidate's work is assessed on the basis of the submission of a thesis containing a number of papers written as journal articles.

2020 tuition fees: Commencing domestic candidates enrolling in a master by research or doctoral degree at ACU will be offered a Research Training Program Fee Offset Scholarship under the Australian Government's Research Training Program.

Entry requirements for 2021: An applicant for admission to candidature for the Doctor of Philosophy must have completed one of the following:

- an appropriate undergraduate degree with honours at a minimum level of Second Class Division A (distinction average); or
- a master's degree with appropriate research training in a relevant field; or
- an equivalent qualification and/or demonstrated research experience with evidence of capacity to undertake independent research work (eg an authored publication).

Applicants should find a suitable supervisor prior to submitting an application. You can find information about our supervisors at rexr.acu.edu.au

Doctor of Education

📍 Online 🕒 Min 2.5 yrs FT, max 3 yrs FT (or equivalent PT)

The Doctor of Education is designed for education professionals who want to further their knowledge and understanding in specific areas of education.

The course integrates theory, research and practice to nurture individuals capable of exploring and enhancing educational systems and practices in local and broader communities.

You are encouraged to explore research topics relevant to your career interests and are required to carry out original, independent and supervised research in your chosen field of education.

2020 tuition fees: Domestic research candidates may be offered a Research Training Program Fee Offset Scholarship under the Australian Government's Research Training Program.

Entry requirements for 2021: To be eligible for admission to the course, an applicant must have completed:

- a master degree in education (or equivalent), with a credit average or higher; and
- at least five years' relevant work experience.

Master of Philosophy (MPhil)

📍 Ballarat, Brisbane, Canberra, Melbourne, North Sydney 🕒 2 yrs FT (or equivalent PT)

The Master of Philosophy (MPhil) is a two year research degree in any field covered by the university. It is assessed based on a written thesis, which is submitted at the conclusion of the degree.

2020 tuition fees: Commencing domestic candidates enrolling in a master by research or doctoral degree at ACU will be offered a Research Training Program Fee Offset Scholarship under the Australian Government's Research Training Program.

Entry requirements for 2021: An applicant for admission to candidature for the Master of Philosophy must have completed one of the following:

- an appropriate undergraduate degree with honours at a minimum level of Second Class Division A (distinction

average); or

- postgraduate research training (eg coursework completed to distinction level or higher or a master by coursework degree); or
- demonstrated research experience with evidence of capacity to undertake independent research work (eg an authored publication).

Applicants should find a suitable supervisor prior to submitting an application. You can find information about our supervisors at rexr.acu.edu.au

Master of Health Science Research (Discipline)

📍 Online ⌚ 1.5 years: first year PT only, thereafter PT or FT

This program provides you with the knowledge and skills to plan and execute a substantial piece of ethical research with a high level of personal autonomy and accountability in a range of health contexts according to discipline area. Supervision provided will be subject to availability of supervisors and resources.

2020 tuition fees: Domestic research candidates may be offered a Research Training Program Fee Offset Scholarship under the Australian Government's Research Training Program.

Entry requirements for 2021: To apply for this course, you must have:

- an undergraduate degree and at least a graduate

certificate/diploma in an appropriate field of study with a credit average or higher; or

- an undergraduate degree in a health or health-related profession, with a credit average or higher, and at least 12 months in professional practice.

Exit points: Failure to successfully complete timely Confirmation of Candidature will trigger an exit with a graduate certificate (health science research methods), provided all four units have achieved a pass grade. Students successfully completing 160 credit points and a pass on thesis examination will exit with a Master of Health Science Research (Discipline).

Note: This course is subject to final approval.

Master of Theology (Research)

📍 Ballarat, Brisbane, Canberra, Melbourne, Strathfield ⌚ 1 yr FT (or equivalent PT)

The Master of Theology (Research) is a higher degree by research that can be undertaken either by thesis, or by coursework and thesis. It provides you with a substantial background in theology and preliminary research training. You will have the opportunity to undertake a major piece of theological research in a specialised area.

Graduates will be able to provide leadership at local, national, and international levels, demonstrating:

- advanced knowledge and skills in a theological discipline, which may include philosophy
- the capacity to successfully undertake a major piece of theological or philosophical research under supervision.

2020 tuition fees: Domestic research candidates may be offered a Research Training Program Fee Offset Scholarship under the Australian Government's Research Training Program.

Entry requirements for 2021: To be eligible for admission you must comply with the Higher Degree Research Regulations and have completed:

- an undergraduate degree in theology (or equivalent) with honours at a minimum level of Second-Class Division A; or
- a Master of Theological Studies with a distinction average or higher in Theology Project C and Introduction to Theological and Philosophical Research (or equivalent); and
- a specialisation in one of the theological disciplines; or philosophy as it relates to theology.

Meeting the requirements for admission are not a guarantee of admission. Your potential to undertake research, the quality and feasibility of the research proposal, the availability of appropriate supervision and the referee's reports will all be taken into consideration. Please refer to 5.2 of the Higher Degree Research Regulations on the ACU website.

Graduate Certificate in Safeguarding Children and Young People

📍 Online ⌚ 6 mths FT (or equivalent PT)

Develop knowledge and an understanding of contemporary issues and responses to safeguarding children and young people. You will explore the conditions and factors that facilitate or impede child-safe environments.

2020 tuition fees: Average first year fee (FT): \$8,800 fee-paying (indicative only).

Entry requirements for 2021: To be eligible for admission to the course, an applicant must have an undergraduate degree in

any discipline or equivalent relevant professional experience.

This course is a four unit (40 credit point) Australian Qualifications Framework level 8 course. It is a cross-disciplinary standalone course.



Pierre-Cedric
MBA (Executive) graduate

EXECUTIVE EDUCATION

A NEW CLASS OF LEADERSHIP FOR A NEW KIND OF LEADER

Just as tomorrow's challenges will bear little resemblance to those of today, great leaders will look nothing like the models we've become familiar with.

That's because the environment is one of constant unknowns, rather than familiar patterns. Innovative future leaders will thrive in uncertainty, succeed in business, and excel in life.

ACU Executive Education is about developing innovative leaders who are eager to redefine business, move forward effectively and are ready to make a real difference to their organisations and the world.

We do this through a range of exceptional masterclasses, short courses and executive postgraduate qualifications uniquely created for today's busy professionals.

Alternatively, we can create leadership programs that are designed specifically for your organisational needs.

We believe standing still is not an option. We want to encourage you to be curious as you pursue your journey of personal growth, and pave your own way through the complexity to make a difference.



MASTERCLASS AND SHORT COURSE TOPICS

- Psychology of selling
- Negotiation leadership
- Embedding good governance in organisations
- Social psychology of risk
- Mindfulness and leadership
- Change management
- Leadership and executive coaching
- Emerging technologies
- Business administration
- Marketing for leaders
- Organisational strategy
- Science of high performance teams
- Science of influencing people
- Leadership and culture
- Having difficult conversations and setting boundaries
- Systemic thinking



EXECUTIVE POSTGRADUATE QUALIFICATIONS

- Executive Master of Business Administration
- Management of not-for-profit organisations
- Leadership and Catholic culture
- Governance and management
- Psychology of risk
- Family and systemic therapy



CONTACT US

(02) 9739 2652
acu.edu.au/executiveeducation
executiveeducation@acu.edu.au

Course directory

PAGE	COURSE
ALLIED HEALTH	
17	Master of Mental Health
17	Graduate Diploma in Mental Health
17	Graduate Certificate in Mental Health
18	Master of Rehabilitation
18	Graduate Diploma in Rehabilitation
18	Graduate Certificate in Rehabilitation
19	Master of Rehabilitation (Occupational Therapy)
19	Graduate Certificate in Rehabilitation (Occupational Therapy)
20	Master of Rehabilitation (Speech Pathology)
20	Graduate Certificate in Rehabilitation (Speech Pathology)
20	Master of Rehabilitation (Gerontological Physiotherapy)
21	Master of Rehabilitation (Neurological Physiotherapy)
21	Graduate Certificate in Rehabilitation (Physiotherapy)
22	Master of Social Work
BUSINESS	
24	Master of Business Administration
26	Master of Finance
26	Graduate Diploma in Financial Planning
27	Master of Professional Accounting
27	Master of Occupational Health, Safety and Environmental Management
28	Graduate Diploma in Occupational Health, Safety and Environmental Management
28	Graduate Certificate in Occupational Health, Safety and Environmental Management
INFORMATION TECHNOLOGY	
30	Master of Information Technology
LAW	
32	Bachelor of Laws (Graduate Entry)
32	Graduate Diploma in Australian Migration Law and Practice
NURSING, MIDWIFERY AND PARAMEDICINE	
35	Master of Clinical Nursing
35	Graduate Diploma in Clinical Nursing
35	Graduate Certificate in Clinical Nursing
37	Master of Mental Health Nursing
37	Graduate Diploma in Mental Health Nursing
37	Graduate Certificate in Mental Health Nursing
38	Bachelor of Midwifery (Graduate Entry)
38	Bachelor of Paramedicine (Professional Entry)
PROFESSIONAL EDUCATION	
40	Master of Educational Leadership
40	Graduate Certificate in Educational Leadership
41	Master of Education
42	Graduate Certificate in Education
PSYCHOLOGY	
44	Master of Psychology (Clinical)
44	Master of Psychology (Educational and Developmental)
45	Master of Psychology (Clinical)/Doctor of Philosophy
45	Master of Psychology (Educational and Developmental)/Doctor of Philosophy
46	Master of Professional Psychology
46	Bachelor of Psychological Science (Honours)
47	Graduate Diploma in Psychology

PAGE	COURSE
PUBLIC HEALTH AND ADMINISTRATION	
49	Master of Health Administration
49	Graduate Diploma in Health Administration
49	Graduate Certificate in Health Administration
50	Master of Leadership and Management in Health Care
51	Master of Health Professional Education
51	Graduate Diploma in Health Professional Education
51	Graduate Certificate in Health Professional Education
52	Master of Public Health
52	Master of Public Health (Global Health and Advocacy)
52	Graduate Diploma in Public Health
52	Graduate Certificate in Public Health
52	Graduate Certificate in Global Health
SPORT AND EXERCISE SCIENCE	
54	Master of Clinical Exercise Physiology
55	Graduate Certificate in Exercise Rehabilitation for Sports Injuries
56	Master of High Performance Sport
56	Graduate Diploma in High Performance Sport
57	Graduate Certificate in High Performance Sport
57	Graduate Certificate in High Performance Sport Leadership
58	Graduate Certificate in Performance Analysis
TEACHING	
60	Master of Teaching (Early Childhood and Primary)
60	Master of Teaching (Early Childhood Education and Primary)/Graduate Certificate in Religious Education
61	Master of Teaching (Primary)
61	Master of Teaching (Primary)/Graduate Certificate in Religious Education
63	Master of Teaching (Secondary)
63	Master of Teaching (Secondary)/Graduate Certificate in Religious Education
THEOLOGY	
65	Master of Theological Studies
65	Graduate Certificate in Theological Studies
67	Master of Professional Studies in Theology
67	Master of Religious Education
68	Graduate Certificate in Religious Education
68	Graduate Certificate in Catholic Studies
HIGHER DEGREE RESEARCH AND OTHER COURSES	
70	Doctor of Philosophy
70	Doctor of Education
70	Master of Philosophy
71	Master of Health Science Research (Discipline)
71	Master of Theology (Research)
71	Graduate Certificate in Safeguarding Children and Young People

Open Day

Every year we throw open our doors and invite you to join us on campus. If you've got questions, we'll be waiting with the answers at Open Day.

openday.acu.edu.au

Ballarat Campus
Sun 30 August
10am – 2pm

Brisbane Campus
Sat 25 July
9am – 2pm

Canberra Campus
Sat 22 August
9.30am – 2.30pm

Melbourne Campus
Sun 9 August
10am – 3pm

North Sydney Campus
Sat 5 September
9am – 2pm

Strathfield Campus
Sat 12 September
9am – 2pm

Blacktown Information Day

Join us to talk to experts about courses, admission pathways, and opportunities at our Blacktown Campus.

acu.edu.au/blacktown-info-day

Saturday 1 August
9am – 2pm

Campus tours

Book a campus tour to see what sets us apart.

acu.edu.au/campus-tours

Got a question or feeling social?

AskACU: acu.edu.au/askacu

We're here to help

If you've got a question, our AskACU team has you covered. You can search FAQs, text us, email, live chat, call – whatever works for you.

 facebook.com/Australian.Catholic.University

 [@acuimages](https://www.instagram.com/acuimages)  [auscatholicuni](https://www.snapchat.com/add/auscatholicuni)

 [@ACUmedia](https://twitter.com/ACUmedia)  [ACUsocial](https://www.youtube.com/ACUsocial)

Send us your details and we will keep you in the loop about courses, events, information sessions and more.



ACU is committed to sustainability. This document is printed on paper sourced from PEFC-certified, sustainably managed forests.

Australian Catholic University attempts to ensure the information contained in this publication is correct at the time of production (January 2020). However, sections may be amended without notice by the university in response to changing circumstances or for any other reason. Check the course browser on the ACU website for the most up-to-date information.